

CORRECTION

Open Access



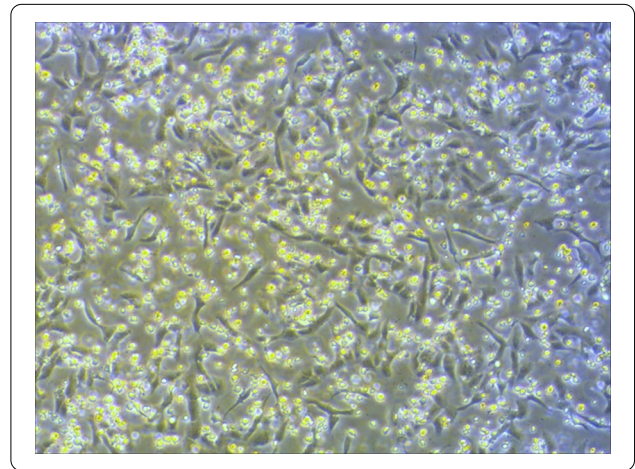
# Correction to: Pulmonary edema following central nervous system lesions induced by a non-mouse-adapted EV71 strain in neonatal BALB/c mice

Yuefei Jin<sup>1</sup>, Chao Zhang<sup>1</sup>, Rongguang Zhang<sup>1,2</sup>, Jingchao Ren<sup>2,3</sup>, Shuaiyin Chen<sup>1</sup>, Meili Sui<sup>1</sup>, Guangyuan Zhou<sup>3</sup>, Dejian Dang<sup>1</sup>, Jiehui Zhu<sup>1</sup>, Huifen Feng<sup>4</sup>, Yuanlin Xi<sup>1</sup>, Haiyan Yang<sup>1,2</sup> and Guangcai Duan<sup>1\*</sup>

## Correction to: *Virology Journal* (2017) 14:243

<https://doi.org/10.1186/s12985-017-0911-5>

Following publication of the original article [1], the authors identified an unintended error in the Fig. 1c. The picture of EV71 (ZZ1350)-induced CPE in Vero cells at the MOI of 5.0 was the same for the picture of EV71 (ZZ1350)-induced CPE in Vero cells at the MOI of 1.0. These two pictures were captured under different backgrounds and were mistakenly put together during submission. In this Correction, the picture of EV71 (ZZ1350)-induced CPE in Vero cells at the MOI of 5.0 has now been replaced with the correct picture. We are sorry for the inconvenience caused by this unintended error. This correction does not affect the results and conclusions of this work.



## Author details

<sup>1</sup> Department of Epidemiology, College of Public Health, Zhengzhou University, No. 100 Kexue Avenue, Zhengzhou 450001, Henan, China. <sup>2</sup> Henan Collaborative Innovation Center of Molecular Diagnosis and Laboratory Medicine, Xinxiang, People's Republic of China. <sup>3</sup> Department of Epidemiology, College of Public Health, Xinxiang Medical University, Xinxiang, People's Republic of China. <sup>4</sup> Department of Infectious Diseases, The Fifth Affiliated Hospital of Zhengzhou University, Zhengzhou, Henan, People's Republic of China.

The original article can be found online at <https://doi.org/10.1186/s12985-017-0911-5>.

\*Correspondence: [gcduan@zzu.edu.cn](mailto:gcduan@zzu.edu.cn)

<sup>1</sup> Department of Epidemiology, College of Public Health, Zhengzhou University, No. 100 Kexue Avenue, Zhengzhou 450001, Henan, China  
Full list of author information is available at the end of the article

Published online: 02 February 2021



© The Author(s) 2021. **Open Access** This article is licensed under a Creative Commons Attribution 4.0 International License, which permits use, sharing, adaptation, distribution and reproduction in any medium or format, as long as you give appropriate credit to the original author(s) and the source, provide a link to the Creative Commons licence, and indicate if changes were made. The images or other third party material in this article are included in the article's Creative Commons licence, unless indicated otherwise in a credit line to the material. If material is not included in the article's Creative Commons licence and your intended use is not permitted by statutory regulation or exceeds the permitted use, you will need to obtain permission directly from the copyright holder. To view a copy of this licence, visit <http://creativecommons.org/licenses/by/4.0/>. The Creative Commons Public Domain Dedication waiver (<http://creativecommons.org/publicdomain/zero/1.0/>) applies to the data made available in this article, unless otherwise stated in a credit line to the data.

#### Reference

Jin X, et al. *Virology Journal*. 2017;14:243. <https://doi.org/10.1186/s12985-017-0911-5>.

#### Publisher's Note

Springer Nature remains neutral with regard to jurisdictional claims in published maps and institutional affiliations.

**Ready to submit your research? Choose BMC and benefit from:**

- fast, convenient online submission
- thorough peer review by experienced researchers in your field
- rapid publication on acceptance
- support for research data, including large and complex data types
- gold Open Access which fosters wider collaboration and increased citations
- maximum visibility for your research: over 100M website views per year

**At BMC, research is always in progress.**

Learn more [biomedcentral.com/submissions](https://biomedcentral.com/submissions)

