


RESEARCH

Open Access



The genetic structure of *Turnip mosaic virus* population reveals the rapid expansion of a new emergent lineage in China

Xiangdong Li^{1†}, Tiansheng Zhu^{2†}, Xiao Yin^{1†}, Chengling Zhang⁴, Jia Chen¹, Yanping Tian^{1*} and Jinliang Liu^{3*} 

Abstract

Background: *Turnip mosaic virus* (TuMV) is one of the most widespread and economically important virus infecting both crop and ornamental species of the family *Brassicaceae*. TuMV isolates can be classified to five phylogenetic lineages, basal-B, basal-BR, Asian-BR, world-B and Orchis.

Results: To understand the genetic structure of TuMV from radish in China, the 3'-terminal genome of 90 TuMV isolates were determined and analyzed with other available Chinese isolates. The results showed that the Chinese TuMV isolates from radish formed three groups: Asian-BR, basal-BR and world-B. More than half of these isolates (52.54%) were clustered to basal-BR group, and could be further divided into three sub-groups. The TuMV basal-BR isolates in the sub-groups I and II were genetically homologous with Japanese ones, while those in sub-group III formed a distinct lineage. Sub-populations of TuMV basal-BR II and III were new emergent and in a state of expansion. The Chinese TuMV radish populations were under negative selection. Gene flow between TuMV populations from Tai'an, Weifang and Changchun was frequent.

Conclusions: The genetic structure of *Turnip mosaic virus* population reveals the rapid expansion of a new emergent lineage in China.

Keywords: *Turnip mosaic virus*, *Potyvirus*, Genetic structure, Population, China

Background

Due to the error-prone nature of their RNA-dependent RNA polymerases, populations of plant RNA viruses are genetically heterogeneous and the genetic structure may change with time and environment [1, 2]. Studies of the genetic structure of viruses will provide information about the mechanisms and factors driving their evolution and help us to understand the molecular evolutionary history of viruses in relation to their dispersion and emergence of new epidemics [3].

Turnip mosaic virus (TuMV) is a species of the largest plant virus genus *Potyvirus* (family *Potyviridae*). TuMV

has flexuous filamental particles of 700–750 nm long and can be transmitted by 40–50 species of aphids in a non-persistent manner [4, 5]. The TuMV genome consists of one single-stranded positive sense RNA molecule of approximately 9830 nucleotides (nt) and contains a large open reading frame (ORF) [6]. The genomic RNA is translated into a large polyprotein and a frame-shift protein. The large polyprotein are subsequently processed by the action of three viral-encoded proteinases (PI, HC-Pro and NIa-Pro) into ten mature functional products [7, 8]. A frame-shift protein, P3N-PIPO, was reported to be involved in the pathogenesis and movement of TuMV [9, 10].

TuMV can infect plants of 300 species in 43 families, and is probably the most widespread and economically important virus infecting both crop and ornamental species of family *Brassicaceae* [11, 12]. In an extensive survey conducted in 28 countries, TuMV ranked second for crop

* Correspondence: yanping.tian@sdau.edu.cn; jlliu@jlu.edu.cn

†Equal contributors

¹Laboratory of Plant Virology, Department of Plant Pathology, College of Plant Protection, Shandong Agricultural University, Tai'an, Shandong 271018, China

³College of Plant Sciences, Jilin University, Changchun 130062, China

Full list of author information is available at the end of the article



yield losses [4]. TuMV is a highly variable and has many biological and serological strains [13–16]. According to its host range, TuMV isolates can be classified to two pathotypes, B (mainly infects plants of the genus *Brassica*) and BR (infects plants of both *Brassica* and *Raphanus*). The brassica-infecting TuMV isolates were categorized into four phylogenetic lineages, basal-B, basal-BR, Asian-BR and world-B, which correlated well with their differences in pathogenicity and geographical origin [17]. Most recently, a monophyletic sister lineage called ‘Orchid group’ was detected from wild orchids-infecting TuMV isolates, which are more likely the ancestor of TuMV [18]. As in other potyviruses [19], recombination is a frequent event in the evolution of TuMV. Intra- and inter-lineage recombinants are common in natural populations of TuMV and can be detected throughout the genome [6, 20–22]. The Chinese and Japanese TuMV isolates are part of the same population but are a discrete lineage [22, 23]. The gene flow between sub-populations of TuMV from Vietnam, Japan and China are frequent [20]. The basal-BR isolates have occurred over the whole Japanese islands and have evolved into four sub-lineages [23–25].

Previous studies showed that the TuMV isolates of China can be clustered to world-B and Asian-BR groups [10, 17, 24, 26, 27]. However, we have detected the existence of basal-BR isolates in China and reported the complete genomic sequences of two basal-BR isolates that represented two novel recombination patterns [6, 28]. Here, we studied the genetic structure of TuMV population in China and found that the basal-BR group of TuMV was expanding in China.

Methods

Virus samples, RNA extraction and sequencing

Leaf samples of radish from Heilongjiang, Jilin and Shandong provinces from 2005 to 2010 were collected. All the samples were biologically purified by three cycles of single lesion isolation in *Chenopodium amaranticolor* and propagated in *B. rapa*. Inoculated plants were maintained in a glasshouse at 25 °C.

Total RNAs were extracted from 100 mg TuMV-infected *B. rapa* leaves with the Invitrogen Trizol Kit following instructions of the manufacturer. The 3-terminus of TuMV (~1.1 kb) were amplified with RT-PCR using primers CP-F (5′-ATC TTC GAA GAT TAC GAA GA-3′) and CP-R (5′-CCT TGC TTC CTA TCA AAT G-3′) [29]. The fragments were cloned into pMD18-T vector (TaKaRa Biotechnology Dalian Co, Ltd) and sequenced by a ABI PRISM™ 377 DNA Sequencer. For each isolate, at least four clones from two separate PCR were sequenced. In case of any inconsistency, at least two more clones will be sequenced to obtain the consensus sequence.

Recombination analysis

The sequences of 101 TuMV isolates and other 28 obtained from the GenBank database were subjected to recombination analyses using the software package RDP3, which assembled programs RDP [30], GENECONV [31], BOOTSCAN [32], MAXCHI [33], CHIMEARA [34] and SISCAN. The sequences were analyzed using the default settings for different detection programs and a Bonferroni-corrected *P*-value cut off of 0.05. The potential recombinants identified by the programs in RDP3 were re-checked using PHYLPRO [35]. The RDP, BOOTSCAN and SISCAN programs were based on phylogenetic methods, whereas GENECONV, MAXCHI and CHIMEARA programs were substitution methods, and the PHYLPRO program was a distance comparison method. Only those sequences with recombination supported by at least three programs or two kinds of methods and with *P*-value $<1.0 \times 10^{-6}$ were regarded as ‘clear’ recombinants; otherwise, they were called as ‘tentative’ recombinants [23, 25].

Phylogenetic analysis of the TuMV population

Sequence alignments were performed using the CLUSTAL W program (Thompson et al., 1994). Phylogenetic tree of TuMV isolates excluding the recombinant ones was constructed using methods including Maximum Likelihood (ML) method that are packaged in the MEGA6.0 [36]. The CP gene of one *Narcissus yellow stripe virus* (NYSV) isolate was used as outgroup [37]. Bootstrap analysis was repeated 1000 times to evaluate the significance of the internal branches.

Sequences diversity and population demography analysis

DnaSP version 5.10 was used to calculate the values of nucleotide diversity, Tajima’s *D*, Fu and Li’s *D* and *F* tests, haplotype diversity and nucleotide diversity [38–40]. Tajima’s *D*, Fu and Li’s *D* and *F* tests hypothesize that all mutations are selectively neutral. Tajima’s *D* test depends on the differences between the numbers of segregating sites and the average number of nucleotide differences. Fu and Li’s *D* test is related the differences between the number of singletons (mutations appearing only once among the sequences) and the total numbers of mutations. Fu and Li’s *F* test is based on the differences between the numbers of singletons and the average number of nucleotide differences among all pairs of sequences. Haplotype diversity refers to the frequency and number of haplotypes in the population. Nucleotide diversity estimates the average pairwise differences among sequences. The nucleotide diversities were calculated within and between groups. DnaSP version 5.10 [40] was also used to estimate the frequency distribution of the number of pairwise differences among all sequences. Mismatch distribution of all populations were estimated on all pairs of haplotypes present in a population [40]. Mismatch distribution analysis was

based on 1000 simulated samples and used to evaluate whether a population had undergone sudden expansion or maintained constant size. In a recently expanded and still intact population, the majority of lineage coalescence events were expected to produce a smooth unimodal Poisson distribution around the time of expansion; otherwise, multimodal and ragged distribution was expected.

Selection pressure, genetic differentiation and gene flow

The selection pressure was estimated by d_N/d_S ratio, where d_N represented the average number of non-synonymous substitutions per non-synonymous site and d_S represented the average number of synonymous substitutions per synonymous site. The values of d_N and d_S were estimated separately by using the PBL method [41, 42] implemented in MEGA 6.0. When d_N/d_S ratio = 1, it means that neutral selection had occurred; when $d_N/d_S < 1$ or > 1 , it means that negative (purifying) or positive (diversifying) selection, respectively, had occurred. Genetic distances were calculated by Pamilo-Bianchi-Li (PBL) methods [41, 42].

Genetic differentiation between populations was examined by three permutation-based statistical tests, Ks^* , Z and Snn [43, 44]. $P < 0.05$ was considered as the criterion for rejecting the null hypothesis that there is no genetic differentiation between two subpopulations. The level of gene flow between populations was measured by estimating F_{st} (the inter-population component of genetic variation or the standardized variance in allele frequencies across populations) and Nm using DnaSP 5.10 [40]. F_{st} ranges from 0 to 1 for undifferentiated to fully differentiated populations, respectively. Normally, an absolute value of $F_{st} > 0.33$ or $Nm < 1$ suggests infrequent gene flow,

while absolute value of $F_{st} < 0.33$ or $Nm > 1$ suggests frequent gene flow.

Results

Identities between TuMV isolates from radish in China

We collected and biologically cloned 101 TuMV isolates from radish from 2004 to 2010 from Beijing, Hebei, Heilongjiang, Henan, Jilin and Shandong provinces, 94 of which are first reported here. The biological characteristics of all the isolates in *C. amaranticolor* in *B. rapa* showed necrotic lesions and similar mosaic respectively. A fragment of 1082 bp covering partial Nib gene (28 bp), complete CP gene (867 bp) and 3'-UTR (187 bp) was amplified from these isolates. The geographical origin of each isolate is listed in Table 1.

The cloned sequences excluding primers shared identities of 89.6% - 100% at nt level with other 28 Chinese TuMV radish sequences available in Genbank database. These 129 CP gene sequences showed identities of 88.2% - 100% at nt level and 91.3% - 100% at aa level. The identities of 44 TuMV isolates from Weifang were 89.6% - 100% at nt level and 95.1% - 100% at aa level. Those of 37 isolates from Tai'an were 88.9% - 100% at nt level and 94.1-100% at aa level. The 12 Changchun isolates shared identities of 90.3% - 100% at nt level and 95.8% - 100% at aa level.

Recombination analyses

Possible recombination events in the CP-UTR region of 129 radish isolates from China were detected with the program package RDP. Twelve of the sequences (11.4%) analyzed had 'clear' recombination. Among the recombinant isolates, WF0710 was the within-group recombinant

Table 1 Recombination sites and possible parent-like isolates

Isolate	Major parent	Minor parent	B-E	Software*	P-value	Z-value [#]
CHBJ1	WF1-04	WF7-06	15-1051	GBS3	2.07×10^{-18}	9.7
CHBJ2	WF1-04	WF7-06	15-1051	GBS3	2.07×10^{-18}	9.65
CHK16	WF-05	R4	17-387	BMCS3	1.028×10^{-14}	9.43
CHK51	WF-05	R4	17-387	BMCS3	1.028×10^{-14}	9.38
R	WF-05	R4	17-697	MCS3	1.028×10^{-14}	8.92
R5	WF-05	R4	17-451	MCS3	1.028×10^{-14}	10.6
WF2-06	WF1-04	WF7-06	15-1051	GBS3	2.07×10^{-18}	10.2
WF3-06	WF1-04	WF7-06	10-1051	GBS3	2.07×10^{-18}	10.2
WF3-07	WF1-04	WF7-06	10-1047	GBS3	2.07×10^{-18}	10.2
WF8-08	WF1-04	WF7-06	10-1051	GBS3	2.07×10^{-18}	10.1
WF10-07	TA15-08	WF3-08	91-786	MCS3	1.18×10^{-8}	7.1
WFLB3	WF7-06	WF1-04	377-657	GBS3	2.07×10^{-18}	10.6

The recombination crossover sites within CP-UTR of turnip mosaic virus were detected by the recombination detecting programs. The geographical origin of each isolate were showed in Fig. 2

*The programs supporting recombination event. R(RDP), G (Geneconv), B (Bootscan), M (Maxchi), C (Chimaera), S (Siscan) and 3 (3seq). The analysis was carried out with default settings for the different detection methods and a Bonferroni-corrected cutoff of 0.05. The program that has the greatest P-value was marked in bold. B-E represents the beginning and ending point of recombination

of basal-BR isolates, with TA0815 as its major parent and WF0803 as the minor parent; others were between-group recombinants of Asian-BR and world-B isolates, most with WF-05 or WF1-04 of world-B as the major parent and WF7-06 or R4 of Asian-BR as minor parent; WFLB had WF7-06 as its major parent and WF1-04 as minor parent (Table 1).

The recombination pattern can be classified into six types (Fig. 1). More than 50% recombinants belong to recombination pattern 1, with the recombination site located within UTR. WF0710 belonged to pattern II, WFLB3 to pattern III, CHK16 and CHK51 to pattern IV, R5 to pattern V and R to pattern VI (Fig. 1).

Phylogenetic analyses

Using ML method, a phylogenetic tree was constructed with the 118 CP-UTR sequences of TuMV (excluding the 11 between-group recombinants) from radish in China. These TuMV isolates were clustered to three lineages corresponding to world-B, Asian-BR and basal-BR (Fig. 2). The world-B lineage contained only six isolates (R, WF0401, WF-05, TALB, GRJCJ09 and RRJCJ09). The Asian-BR lineage consisted of 50 isolates. The Basal-BR lineage included 62 isolates which can be further divided into three sub-lineages. Sub-lineage Basal-BR I had three isolates (WF0704, WF0802 and TA0815), all of which were from Shandong province. Basal-BR II consisted of 54 isolates. Among which 41 were from Shandong, ten from Jilin, three from Henan, Heilongjiang and Hebei, respectively. Basal-BR III contained five isolates, all of which were found in Tai'an, Shandong province. The genetic distance values within groups ranged from 0.014 to 0.026, which were 4 to 5 times lower than those between groups (0.067 to 0.094) (Table 2). The genetic distance values between sub-groups of basal-BR were 0.033 to 0.041, which were higher than those within sub-groups but lower than those between groups.

The phylogenetic tree constructed with the CP gene could also be divided into three groups corresponding to world-B, Asian-BR and basal-BR. The genetic distance values between groups ranged from 0.076 to 0.091, which were higher than those within groups (0.015 to

0.049). The genetic distance values between sub-groups of basal-BR were 0.032 to 0.049, which were remarkably higher than those within sub-groups (0.004 to 0.015) but lower than those between groups. Therefore, the classification of these TuMV isolates into three groups and basal-BR into three sub-groups was reliable.

To further study the genetic structure of TuMV basal-BR sub-populations from China and Japan, we constructed phylogenetic trees with basal-BR isolates available from both countries using ML method (Fig. 3). These TuMV isolates were clustered into four lineages, corresponding to the ones reported by Tomitaka et al. [25]. Interestingly, the TuMV basal-BR isolates of sub-groups I and II from both China and Japan formed common clusters, which indicated sub-populations of basal-BR I and II from these two countries were genetically identical. However, those of sub-group III from China and Japan formed separate clusters, indicating that China and Japan had different sub-populations of basal-BR III. Sub-group IV consisted of isolates from Japan only. No Chinese TuMV isolate fell into this sub-group.

Selective pressures acting on TuMV CP genes

To estimate the selection pressure acting on TuMV CP genes, we calculated the d_N/d_S ratios for TuMV sub-populations of different collection regions using Pamilo-Bianchi-Li (PBL) method assembled in MEGA version 6.0 [36]. The d_N values for TuMV isolates from Weifang, Tai'an and Changchun were 0.005 ± 0.001 , 0.006 ± 0.001 and 0.002 ± 0.001 , respectively, which were less than the d_S values (0.070 ± 0.007 , 0.098 ± 0.012 and 0.014 ± 0.006). Therefore, the values of the d_N/d_S ratio for TuMV *cp* genes were <1 , indicating that purifying (negative) selection was acting on TuMV *cp* genes. The nucleotide distances were 0.023 ± 0.002 , 0.029 ± 0.003 and 0.005 ± 0.001 , respectively, and showed no significant difference.

Genetic differentiation and gene flow

Genetic differentiation and gene flow between and within populations was examined by five permutation-based statistical tests, Ks^* , Z and Snn or Fst and Nm .

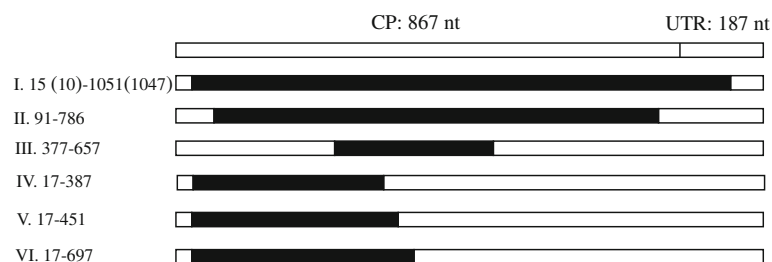


Fig. 1 Recombination patterns in the CP-UTR region of TuMV from radish in China. Twelve recombinants were divided into 6 recombination patterns. I: CHBJ1, CHBJ2, WF2-06, WF3-06, WF8-08, WF3-07; II: WF10-07; III: WFLB3; IV: CHK16, CHK51; V: R5; VI: R

Table 2 Estimates of genetic differentiation among sites (F_{ST}) within each region

Gene	Parameter	WF between WF	TA between TA	WF between TA	WF between CC	TA between CC	CC between CC
CP	Ks(P-value)	3.16314 (1.0000)	3.12325 (1.0000)	3.14501 (0.1200)	3.01985 (0.0080**)	2.90505 (0.0120*)	2.41801 (1.0000)
	Z (P-value)	1935.22093 (1.0000)	1367.97222 (1.0000)	1618.33343 (0.2990)	740.62579 (0.0080**)	534.81963 (0.0060**)	143.22727 (1.0000)
	Snn (P-value)	0.08081 (1.0000)	0.12416 (1.0000)	0.66143 ** (0.0030)	0.88492 (0.0000***)	0.85305 (0.0000***)	0.10000 (1.0000)
	F_{ST}	-0.02326	-0.02778	-0.00436	0.15467	0.15485	-0.09091
	Nm	-11.00	-9.25	-57.56	1.37	1.36	-3.00
UTR	Ks*(P-value)	1.19299 (1.0000)	0.96193 (1.0000)	1.08658 (0.5460)	0.94143 (0.0570) ns	1.13222 (0.0420*)	0.88305 (0.9280) ns
	Z (P-value)	1844.07143 (1.0000)	1362.22222 (1.0000)	1581.52519 (0.4120)	552.71858 (0.0680) ns	723.74704 (0.0470*)	140.95455 (1.0000) ns
	Snn (P-value)	0.34906 (1.0000)	0.39139 (1.0000)	0.52678 (0.1430)	0.68796 (0.0230*)	0.69754 (0.0780) ns	0.31111 (1.0000) ns
	F_{ST}	-0.02381	-0.02778	-0.01268	0.08893	0.11459	-0.09091
	Nm	-10.75	-9.25	-19.96	2.56	1.83	-3.00

WF isolates from Weifang of Shandong province, TA isolates from Tai'an of Shandong province, CC isolates from Changchun of Jilin province
ns not significant; *, $0.01 < P < 0.05$; **, $0.001 < P < 0.01$; ***, $P < 0.001$. Determined using 1000 permutations

The results showed no genetic differentiation between or within TuMV sub-populations from Tai'an and Weifang in the CP genes or UTR (Table 2).

The absolute values of F_{ST} between or within TuMV populations of Tai'an, Weifang and Changchun were all below 0.33, indicating that the gene flow between or within TuMV populations of Tai'an and Weifang, and that with TuMV population of Changchun is most frequent; however, the gene flow between Changchun and Tai'an, and Changchun and Weifang is less frequent. The absolute values of $Nm > 1$ also support the conclusion on gene flow.

Population dynamics

The Tajima's D , Fu & Li's D^* , Fu & Li's F^* values for TuMV basal-BR II sub-population from Weifang and Tai'an of Shandong province were negative and the data is significant, which indicated that these sub-populations were in state of increasing (Table 3). Sub-populations of Asian-BR and basal-BRIII from Tai'an, Asian-BR from Weifang, and basal-BR from Changchun were also in a state of increasing, but the data was not significant (Table 3). Haplotype diversity, ranging from 0.890 to 1.000, had little difference between groups or sub-groups. The basal-BR II isolates from Tai'an had the lowest nucleotide diversity of 0.00322, while the Asian-BR isolates from Weifang had the highest one of 0.01159.

The mismatch distribution of TuMV CP gene and 3'-UTR for the basal-BR II isolates collected from Weifang, Tai'an, Changchun and basal-BR III were unimodal and smooth, and fit well with the expected model of sudden expansion, indicating that these sub-populations were new emergent (Fig. 4). The Asian-BR isolates from

Weifang and Tai'an of Shandong province and Zhejiang were multiple-peaked, ragged, indicating that these sub-populations were long-existing ones (Fig. 4).

Discussion

In this paper, we studied the molecular structure of TuMV population from China by analyzing the CP gene sequence of 129 TuMV isolates from radish and comparing them with 41 isolates of basal-BR group from Japan. Our results show that (1) about one-tenth of the TuMV isolates characterized are recombinants; (2) sub-population of basal-BR expands rapidly and accounting for more than one half of the isolates detected; (3) isolates of basal-BR in China evolve to three sub-groups, with sub-groups I and II genetically homologous with Japanese ones, while sub-group III a distinct lineage; (4) Sub-populations of TuMV basal-BR II and III are new emergent and in a state of expansion; (5) the TuMV population of China is under negative selection; (6) frequent gene flow is detected between TuMV sub-populations from Weifang, Tai'an and Changchun.

Recombination is important in virus evolution and has been detected in many potyvirus species [19, 20, 24, 45–48]. The percentages of recombinant isolates may accounting for ten to sixty-five of isolates studied [24, 47]. Intra- and inter-lineage recombination is very common in TuMV [6, 18, 22]. The hotspots of recombination sites of TuMV genome are located in the P1 and CI/6 K2/VPg region [21]. Ohshima and colleagues have detected 37 recombination patterns [6, 21]. Novel recombination patterns of TuMV are increasing [6, 18]. About 10% of the TuMV isolates characterized in this study experienced 'clear' recombination event. The percentage is

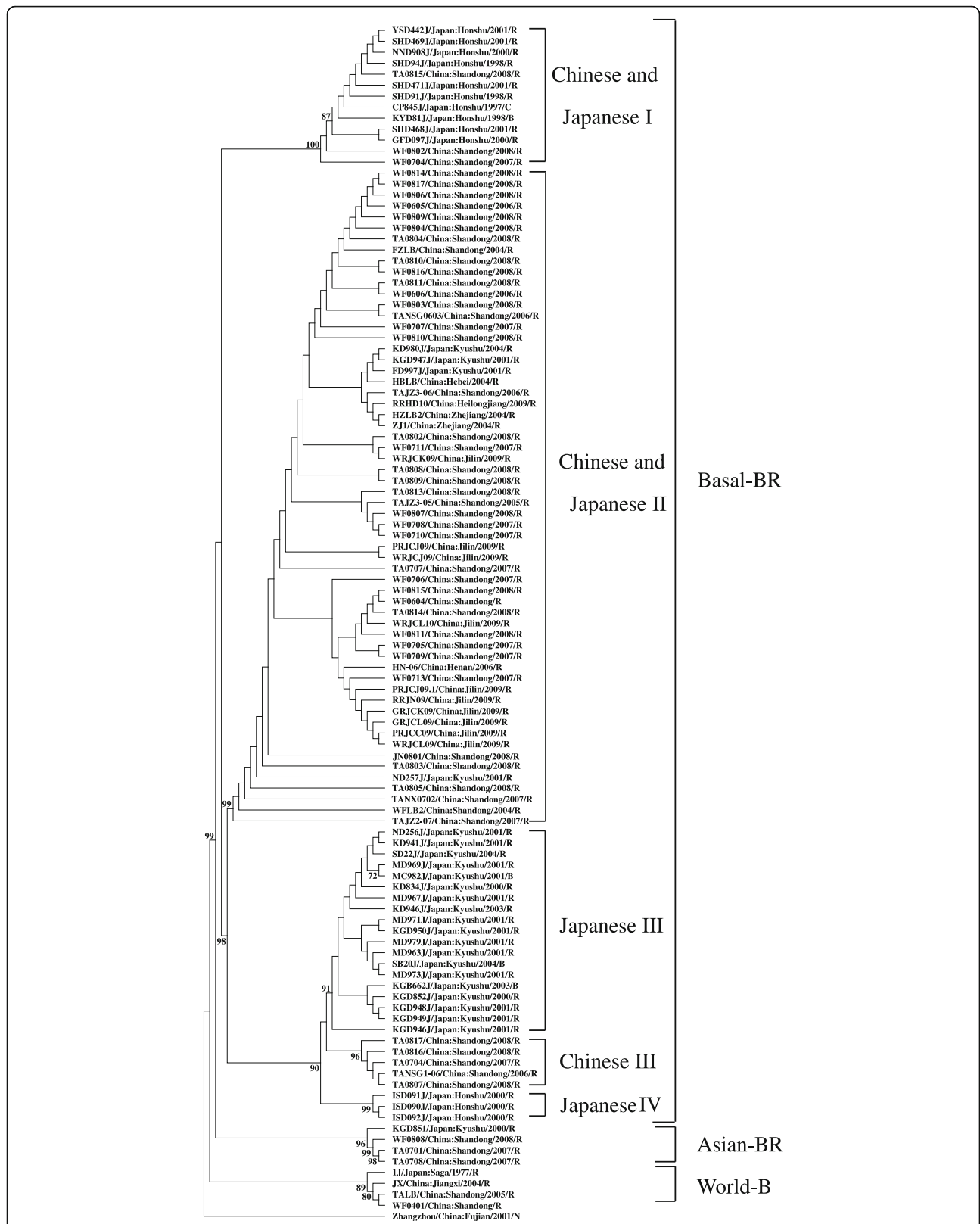


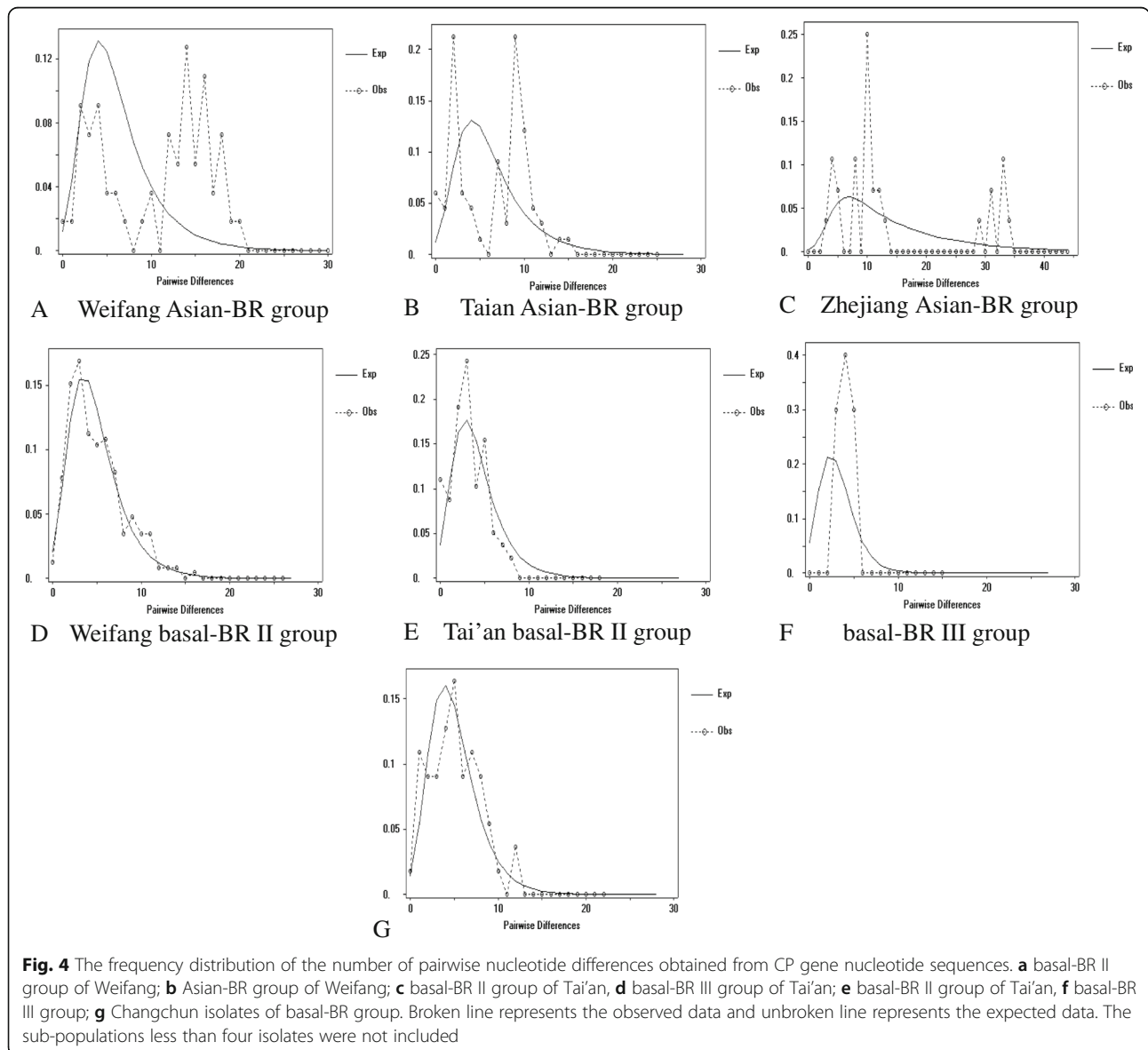
Fig. 3 Phylogenetic trees were constructed by using the Maximum Likelihood method for CP gene nucleotide sequences of TuMV isolates of basal-BR collected from China and Japan. One *Narcissus yellow stripe virus* (NYSV) isolate (accession number: AJ311372) was used as outgroup. Isolates in the figure were listed by isolate name/location of origin/year of collection/original host (R is for *Raphanus*; B for *Brassica*; C for *Brassica and Raphanus*; N for *Not available*).

Table 3 Neutrality tests, haplotype and nucleotide diversity of *Turnip mosaic virus* sub-populations

Group		Haplotype diversity	Nucleotide diversity	Tajima's D	Fu and Li's D	Fu and Li's F
Tai'an	basal-BR II	0.890 (0.073)	0.00322 (0.00062)	-2.19554**	-2.72246*	-2.72246**
	basal-BR III	1.000 (0.126)	0.00417 (0.00073)	-1.18441	-1.18441	-1.24511
	Asian-BR	0.939 (0.058)	0.00661 (0.00130)	-0.95449	-0.79711	-0.95432
Weifang	basal-BR II	0.960 (0.031)	0.00490 (0.00073)	-2.39975**	-3.45534 **	-3.66541**
	Asian-BR	0.987 (0.023)	0.01159 (0.00161)	-1.22279	-1.79120	-1.88684
Changchun	basal-BR	0.982 (0.046)	0.00478 (0.00095)	-1.63909	-2.06292	-2.21575

The sub-populations less than four isolates were not included

*: $P < 0.05$, **: $P < 0.02$



a little lower than previous studies [18, 22]. The reasonable explanation might be that we just analyzed the CP-UTR region, where the crossover sites of TuMV are scarce [18, 22, 23]. If longer sequences or the whole genome is included, there would be more recombination events detected.

The d_N/d_S ratios are often used to estimate the selection pressure under which viral gene (s) suffered [10, 49]. Positive selection ($d_N/d_S > 1$) may endow the virus more fitness to adapt a new host or environment. However, rapid divergence driven by positive selection has been rarely demonstrated [50]. Like the case of most virus genes, our results show that negative (purifying) selection dominates the evolution of TuMV CP genes. If selection pressure on single residue is estimated, amino acids under positive selection may be sorted out [49].

Basal-BR is a new emergent in east Asia and has been detected in Japan and China [6, 17, 23, 28]. So far, there has been no basal-BR isolates reported in Vietnam [20]. After its first detection in 2005 [28], the population of basal-BR isolates increased rapidly in China and showed characteristics of founder effect. As reported in this research, Basal-BR isolates were detected from samples from Hebei, Henan, Jilin and Shandong provinces, and accounted to more than half of the isolates from Shandong and Jilin provinces. The Chinese basal-BR isolates have evolved to three sub-groups. Among the 48 basal-BR isolates from Weifang and Tai'an of Shandong province, 40 belonged to sub-group II, which represents the prevalent cluster in those areas. Basal-BR III was detected after 2006 and only found in Tai'an of Shandong province. What's more interesting, sub-groups of basal-BR I and II are genetically homologous to those of Japanese isolates, while sub-groups of basal-BR III from China and Japan are genetically distinct and form separate clusters, indicating that China and Japan had different sub-populations. Another difference is that the prevalent sub-group of Basal-BR is II in China but III in Japan.

The gene flow between TuMV isolates of basal-BR II and III from Weifang, Tai'an and Changchun is frequent. But TuMV is transmitted by aphid in a non-persistent manner and there is no evidence of seed transmission reported [4, 5]. It remains unknown how TuMV isolates, especially the new emergent, spread to other places [18, 23, 25]. But TuMV isolates of basal-BR II are prevalent and expanding rapidly in Weifang and Tai'an of Shandong and Changchun of Jilin. Therefore, a program should be launched to evaluate the resistance of commercial available cultivars of cruciferous crops to TuMV isolates, particularly basal-BR II.

Conclusions

Genetic structure of TuMV population in China reveals that the basal-BR group of TuMV was expanding, which was a new emergent lineage in China.

Abbreviations

CP: Coat protein; NYSV: *Narcissus yellow stripe virus*; ORF: Open reading frame; PBL: Pamilo-Bianchi-Li; PIPPO: Pretty Interesting Potyviridae; RdRP: RNA-dependent RNA polymerase; TuMV: *Turnip mosaic virus*

Acknowledgments

Not applicable.

Funding

This research was supported by National Natural Scientific Foundation of China (NSFC, 31,571,984 and 31,201,485), Shandong Provincial Natural Science Foundation, China (SDNSF, Z2007D04 and ZR2011CM019), The National Key Research and Development Program of China (2016YFC0501202) and Jiangsu Provincial Natural Science Foundation, China (BK20140230).

Availability of data and materials

The datasets generated during and/or analysed during the current study are available from the corresponding author on reasonable request.

Authors' contributions

XD-L, TS-Z, X-Y and JL-L had full access to all of the data in the study and takes responsibility for the integrity of the data and the accuracy of the data analysis; Study conception and design: XD-L and YP-T; Acquisition of data: TS-Z, X-Y, CL-Z, J-C and JL-L; Analysis and interpretation of data: XD-L, TS-Z, X-Y, X-Y and JL-L. All authors read and approved the final manuscript.

Ethics approval and consent to participate

Not applicable.

Consent for publication

We have obtained written consent from all participants to publish their data.

Competing interests

The authors declare that they have no competing interests.

Publisher's Note

Springer Nature remains neutral with regard to jurisdictional claims in published maps and institutional affiliations.

Author details

¹Laboratory of Plant Virology, Department of Plant Pathology, College of Plant Protection, Shandong Agricultural University, Tai'an, Shandong 271018, China. ²College of Plant Science and Technology, Tarimu University, Alar 843300, China. ³College of Plant Sciences, Jilin University, Changchun 130062, China. ⁴Xuzhou Sweet Potato Research Center of Jiangsu, Suzhou 221121, China.

Received: 3 June 2017 Accepted: 21 August 2017

Published online: 29 August 2017

References

- Roossinck MJ. Mechanisms of plant virus evolution. *Annu Rev Phytopathol.* 1997;35:191.
- Roossinck MJ. *Plant Virus Evolution.* Berlin Heidelberg: Springer; 2008.
- Garcíaarenal F, Fraile A, Malpica JM. Variability and genetic structure of plant virus populations. *Annu Rev Phytopathol.* 2001;39:157.
- Tomlinson JA. Epidemiology and control of virus diseases of vegetables. *Ann Appl Biol.* 1987;110:661–81.
- Shukla DD, Ward CW, Brunt AA. In: *The Potyviridae.* Edited by Shukla DD, Ward CW and Brunt AA. Wallingford: CAB International. 1994.
- Wang HY, Liu JL, Gao R, Chen J, Shao YH, Li XD. Complete genomic sequence analyses of Turnip mosaic virus basal-BR isolates from China. *Virus Genes.* 2009;38:421–8.
- Riechmann JL, Laín S, García JA. Highlights and prospects of potyvirus molecular biology. *J Gen Virol.* 1992;73(Pt 1):1–16.
- Urcuqui-Inchima S, Haenni AL, Bernardi F. Potyvirus proteins: a wealth of functions. *Virus Res.* 2001;74:157.
- Chung BY, Miller WA, Atkins JF, Firth AE. An overlapping essential gene in the Potyviridae. *Proc Natl Acad Sci U S A.* 2008;105:5897–902.
- Wei T, Zhang C, Hong J, Xiong R, Kasschau KD, Zhou X, Carrington JC, Wang A. Formation of complexes at plasmodesmata for potyvirus

- intercellular movement is mediated by the viral protein P3N-PIPO. *PLoS Pathog.* 2010;6:e1000962.
11. Edwardson JR, Christie RG. The Potyvirus Group. *Univ Fla Monogr.* 1991;3: 699–712.
 12. Shattuck VI. The Biology, Epidemiology, and Control of Turnip Mosaic Virus. *Hortic Rev.* 2010;14:199–238.
 13. Green SK, Deng TC. Turnip mosaic virus strains in cruciferous hosts in Taiwan. *Plant Dis.* 1985;69:28–31.
 14. Liu XP, Lu WC, Li JL, Liu YK. A study on TuMV strain differentiation of cruciferous vegetables from ten provinces in China- Selection of new identification host and strains portion. *Sci Bull.* 1990;35:1734–9.
 15. Jenner CE, Keane GJ, Jones JE, Walsh JA. Serotypic variation in turnip mosaic virus. *Plant Pathol.* 1999;48:101–8.
 16. Jenner CE, Walsh JA. Pathotypic variation in turnip mosaic virus with special reference to European isolates. *Plant Pathol.* 1996;45:848–56.
 17. Ohshima KYY, Hirota R, Hamamoto T, Tomimura K, Tan ZST, Azuhata F, Walsh JA, Fletcher J, Chen JS, Gera A. Molecular evolution of Turnip mosaic virus: evidence of host adaptation, genetic recombination and geographical spread. *J Gen Virol.* 2002;83:1511–21.
 18. Nguyen HD, Tomitaka Y, Ho SYW, Duchêne S, Vetten HJ, Lesemann D, Walsh JA, Gibbs AJ, Ohshima K. Turnip Mosaic Potyvirus Probably First Spread to Eurasian Brassica Crops from Wild Orchids about 1000 Years Ago. *PLoS One.* 2013;8:e55336.
 19. Chare ER, Holmes EC. A phylogenetic survey of recombination frequency in plant RNA viruses. *Arch Virol.* 2006;151:933–46.
 20. Nguyen HD, Tran HT, Ohshima K. Genetic variation of the Turnip mosaic virus population of Vietnam: a case study of founder, regional and local influences. *Virus Res.* 2013;171:138–49.
 21. Ohshima K, Tomitaka Y, Wood JT, Minematsu Y, Kajiyama H, Tomimura K, Gibbs AJ. Patterns of recombination in turnip mosaic virus genomic sequences indicate hotspots of recombination. *J Gen Virol.* 2007;88:298–315.
 22. Tan Z, Wada Y, Chen J, Ohshima K. Inter- and intralineage recombinants are common in natural populations of Turnip mosaic virus. *J Gen Virol.* 2004;85: 2683–96.
 23. Tomitaka Y, Ohshima K. A phylogeographical study of the Turnip mosaic virus population in East Asia reveals an 'emergent' lineage in Japan. *Mol Ecol.* 2007;15:4437–57.
 24. Tomimura K, Gibbs AJ, Jenner CE, Walsh JA, Ohshima K. The phylogeny of Turnip mosaic virus; comparisons of 38 genomic sequences reveal a Eurasian origin and a recent 'emergence' in east Asia. *Mol Ecol.* 2003;12: 2099–111.
 25. Tomitaka Y, Yamashita T, Ohshima K. The genetic structure of populations of Turnip mosaic virus in Kyushu and central Honshu, Japan. *J Gen Plant Pathol.* 2007;73:197–208.
 26. Shi ML. Cloning and sequence analysis of HC-Pro genes of Turnip mosaic virus Eurasian isolates. *Acta Phytopathol Sin.* 2007;383–9.
 27. Song Y. Cloning and sequence analysis of coat protein genes of turnip mosaic virus isolates obtained from shandong. *Sci Agric Sin.* 2005;58:504–10.
 28. Tian YP, Zhu XP, Liu JL, Yu XQ, Du J, Kreuze J, Li XD. Molecular Characterization of the 3'-Terminal Region of Turnip mosaic virus Isolates from Eastern China. *J Phytopathol.* 2007;155:333–41.
 29. Liu JL, Yu XQ, Tian YP, Du J, Zhu XP, Li XD, Yan DY. Molecular characterization and coat protein gene expression of a turnip mosaic virus isolate from radish in Weifang. *Acta Hortic Sin.* 2006;33:84–8.
 30. Martin DP, Lemey P, Lott M, Moulton V, Posada D, Lefevre P. RDP3: a flexible and fast computer program for analyzing recombination. *Bioinformatics.* 2010;26:2462–3.
 31. Sawyer SA. Statistical tests for detecting gene conversion. *Mol Biol and Evol.* 1989;6:526–538. <http://www.math.wustl.edu/~sawyer/geneconv/>.
 32. Salminen MO, Carr JK, Burke DS, McCutchan FE. Identification of breakpoints in intergenotypic recombinants of HIV type 1 by bootscanning. *AIDS Res Hum Retrovir.* 1995;11:1423–5.
 33. Smith JM. Analyzing the mosaic structure of genes. *J Mol Evol.* 1992;34:126–9.
 34. Posada D, Crandall KA. Evaluation of methods for detecting recombination from DNA sequences: computer simulations. *Proc Natl Acad Sci U S A.* 2001; 98:13757–62.
 35. Weiller GF. Phylogenetic profiles: a graphical method for detecting genetic recombinations in homologous sequences. *Mol Biol Evol.* 1998;15:326–35.
 36. Tamura K, Stecher G, Peterson D, Filipiński A, Kumar S. MEGA6: Molecular Evolutionary Genetics Analysis version 6.0. *Mol Biol Evol.* 2013;44:2725.
 37. Chen J, Chen JP, Langeveld SA, Derks AFLM, Adams MJ. Molecular characterization of carla- and potyvirus from Narcissus in China. *J Phytopathol.* 2003;151:26–9.
 38. Fu YX, Li WH. Statistical tests of neutrality of mutations. *Genetics.* 1993;133:693.
 39. Tajima F. Statistical method for testing the neutral mutation hypothesis by DNA polymorphism. *Genetics.* 1989;123:585–95.
 40. Librado P, Rozas J. DnaSP v5: a software for comprehensive analysis of DNA polymorphism data. *Bioinformatics.* 2009;25:1451–2.
 41. Pamilo P, Bianchi NO. Evolution of the Zfx and Zfy genes: rates and interdependence between the genes. *Mol Biol Evol.* 1993;10:271.
 42. Li WH. Unbiased estimation of the rates of synonymous and nonsynonymous substitution. *J Mol Evol.* 1993;36:96–9.
 43. Hudson RR. A new statistic for detecting genetic differentiation. *Genetics.* 2000;155:2011.
 44. Hudson RR, Boos DD, Kaplan NL. A statistical test for detecting geographic subdivision. *Mol Biol Evol.* 1992;9:138.
 45. Moreno IM, Malpica JM, Díaz-Pendón JA, Moriones E, Fraile A, García-Arenal F. Variability and genetic structure of the population of watermelon mosaic virus infecting melon in Spain. *Virology.* 2004;318:451–60.
 46. Alla G, Gagarinova MB, Strömvik MV, Wang A. Recombination analysis of Soybean mosaic virus sequences reveals evidence of RNA recombination between distinct pathotypes. *Virology.* 2008;5:1–8.
 47. Tugume AK, Cuéllar WJ, Mukasa SB, Valkonen JPT. Molecular genetic analysis of virus isolates from wild and cultivated plants demonstrates that East Africa is a hotspot for the evolution and diversification of Sweet potato feathery mottle virus. *Mol Ecol.* 2010;19:3139–56.
 48. Zhang CL, Gao R, Wang J, Zhang GM, Li XD, Liu HT. Molecular variability of Tobacco vein banding mosaic virus populations. *Virus Res.* 2011;158:188.
 49. Tian YP, Liu JL, Zhang CL, Liu YY, Wang B, Li XD, Guo ZK, Valkonen JP. Genetic diversity of Potato virus Y infecting tobacco crops in China. *Phytopathology.* 2011;101:377.
 50. Nielsen R. Changes in dS/dN in the HIV-1 env gene. *Mol Biol Evol.* 1999;16: 711–4.

Submit your next manuscript to BioMed Central and we will help you at every step:

- We accept pre-submission inquiries
- Our selector tool helps you to find the most relevant journal
- We provide round the clock customer support
- Convenient online submission
- Thorough peer review
- Inclusion in PubMed and all major indexing services
- Maximum visibility for your research

Submit your manuscript at
www.biomedcentral.com/submit

