

RESEARCH

Open Access

Overexpression of PRMT6 does not suppress HIV-1 Tat transactivation in cells naturally lacking PRMT6

Haran Sivakumaran[†], Min-Hsuan Lin[†], Ann Apolloni, Vincent Cutillas, Hongping Jin, Dongsheng Li, Ting Wei and David Harrich^{*}

Abstract

Background: Protein arginine methyltransferase 6 (PRMT6) can methylate the HIV-1 Tat, Rev and nucleocapsid proteins in a manner that diminishes each of their functions in *in vitro* assays, and increases the stability of Tat in human cells. In this study, we explored the relationship between PRMT6 and HIV-1 Tat by determining the domains in each protein required for interaction.

Methods: Through domain mapping and immunoprecipitation experiments, we determined that both the amino and carboxyl termini of PRMT6, and the activation domain within Tat are essential for interaction. Mutation of the basic domain of Tat did not affect the ability of PRMT6 to interact with Tat.

Results: We next used the A549 human alveolar adenocarcinoma cell line, which naturally expresses undetectable levels of PRMT6, as a model for testing the effects of PRMT6 on Tat stability, transactivation, and HIV-1 replication. As previously observed, steady state levels and the protein half-life of Tat were increased by the ectopic expression of PRMT6. However, no down regulation of Tat transactivation function was observed, even with over 300-fold molar excess of PRMT6 plasmid. We also observed no negative effect on HIV-1 infectivity when A549 producer cells overexpressed PRMT6.

Conclusions: We show that PRMT6 requires the activation domain, but surprisingly not the basic domain, of Tat for protein interaction. This interaction between Tat and PRMT6 may impact upon pathogenic effects attributed to Tat during HIV-1 infection other than its function during transactivation.

Keywords: HIV, Tat, Protein arginine methyltransferase 6, Protein methylation, A549 cell line

Introduction

The HIV-1 Tat protein is a transcriptional activator that plays an essential role during the late phase of viral replication. Its primary function is to significantly enhance proviral gene expression so that HIV-1 RNA and proteins may be produced for later assembly into infectious virion particles. Tat is recruited along with positive transcription elongation factor b (P-TEFb), primarily composed of cyclin T1 and CDK9, to the RNA polymerase II pre-initiation complex (PIC) assembled at the proviral start site of transcription [1]. Localization of Tat and P-TEFb to the PIC is achieved by the association of P-TEFb, initially complexed with a 7SK small nuclear

ribonucleoprotein (snRNP) particle [2], with the start site of transcription, and by the coordinated binding of Tat and cyclin T1 to the transactivation response element (TAR) RNA stem-loop structure. TAR is spontaneously formed from the nascent mRNA transcribed by RNA polymerase II during transcriptional initiation. The basic domain of Tat is implicated in binding to TAR, whereas the amino-terminal activation domain of Tat interacts with cyclin T1 [1]. The coordinated binding of Tat and cyclin T1 to TAR enables the release of P-TEFb from the 7SK snRNP particle, the hyperphosphorylation of RNA polymerase II by CDK9, the alleviation of negative elongation factors that arrest the polymerase, and the efficient processivity of transcriptional elongation [3,4].

Tat is posttranslationally modified by host factors shortly before or during transactivation [5]. One class of Tat modification that is of emerging interest is methylation at

* Correspondence: david.harrich@qimr.edu.au

[†]Equal contributors

Queensland Institute of Medical Research, Molecular Virology Laboratory, 300 Herston Road, Herston, Brisbane 4006, Australia

lysine and arginine residues [6]. Tat is known to be methylated within its basic domain by protein arginine methyltransferase 6 (PRMT6) [7], SETDB1, SETDB2 [8] and Set7/9-KMT7 [9], and can be demethylated by LSD1/KDM1 following methylation of lysine-51 [10]. Most post-translational modifications of Tat appear to have stimulatory effects on Tat transactivation [11]. In contrast, PRMT6 has been shown to down regulate transactivation by a proposed mechanism in which methylation of Tat arginine-52 interferes with the interaction with TAR [7,12], even though overexpression of PRMT6 results in the increased stability of Tat through inhibition of proteasome-dependent degradation [13]. PRMT6 is a type I enzyme of the protein arginine methyltransferase family [14] which, among other functions, regulates cellular gene expression by methylating arginine-2 of histone H3. Deposition of a methyl group at arginine-2 interferes with the trimethylation of lysine-4 in histone H3, a post-translational modification associated with chromatin remodeling amiable to gene expression [15-18].

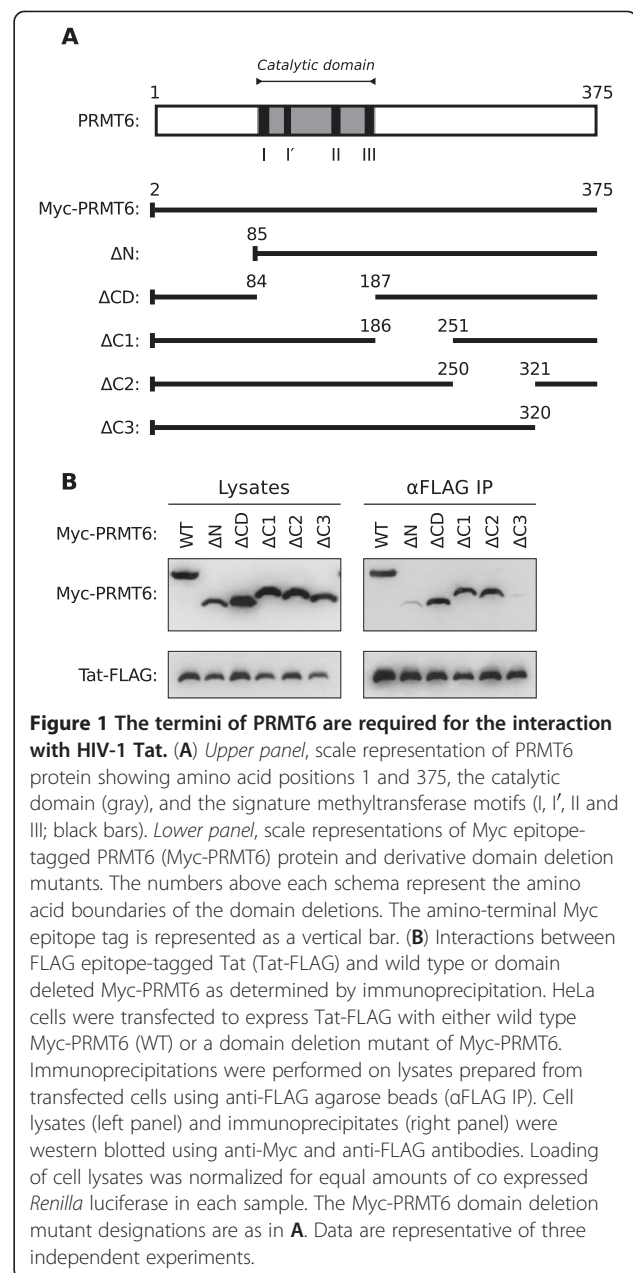
In addition to Tat, PRMT6 was also discovered to methylate the HIV-1 Rev [19] and nucleocapsid proteins [20], again within their respective RNA binding domains and in a manner which down regulates function. Overexpression of PRMT6, however, does not affect the stability of Rev [13]. This apparent targeting of three viral proteins by a single host factor has led to the hypothesis that PRMT6 is a HIV-1 restriction factor [7]. In this study, we aimed to firstly explore the relationship between Tat and PRMT6 by mapping the domains of interaction within both proteins, and secondly to develop a robust cellular model for further testing the effects of PRMT6 on HIV-1 replication. We show that the amino and carboxyl termini of PRMT6 are required for interaction and that, unexpectedly, the activation domain but not the basic domain is the site of interaction within Tat. We also demonstrate that the A549 cell line expresses PRMT6 protein at a level undetectable by western blot. Utilizing the A549 cell line in models of Tat transactivation and HIV-1 infectivity, we show that overexpression of PRMT6 does not down regulate either transactivation or infectivity, in contrast to previously published results [7,12]. Our data invite the re-examination of the role of PRMT6 during HIV-1 replication and suggest that further evidence is required before PRMT6 can definitively be considered a restriction factor.

Results

The termini of PRMT6 interact with Tat

Little is known about the functional domains of PRMT6 apart from a catalytic methyltransferase domain that is conserved among all members of the protein arginine methyltransferase family [14,21]. We and others have

previously demonstrated that PRMT6 functionally interacts with the HIV-1 Tat protein [7,12,13]. It is not known, however, which region of PRMT6 is required for this interaction. Therefore, to map the region of PRMT6 that interacts with Tat, we created several "domain" deletion mutants in a plasmid expressing MYC epitope tagged-PRMT6 (Myc-PRMT6) in a manner that encompassed the entire length of the PRMT6 protein (Figure 1A). The panel of mutants created included a deletion of the amino terminal region adjacent to the catalytic domain (Δ N), a deletion of the catalytic domain itself (Δ CD), and deletions of three non-overlapping regions at the carboxyl end (Δ C1, Δ C2 and Δ C3; Figure 1A).



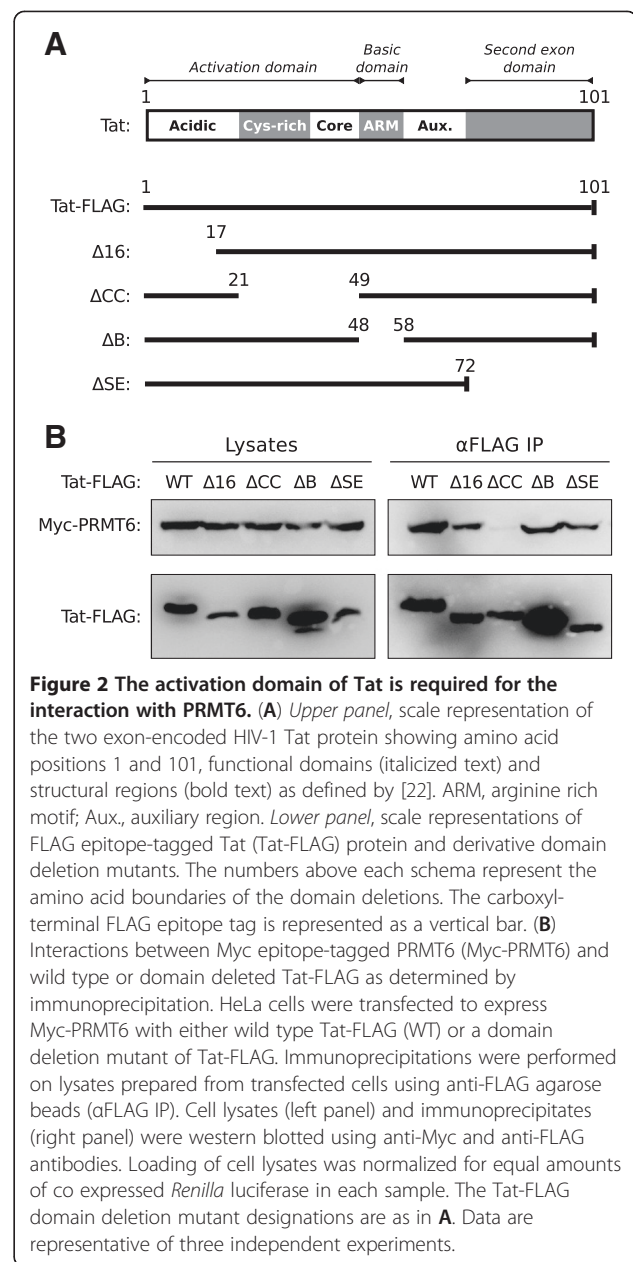
To assess the abilities of these mutants to interact with Tat, immunoprecipitations were performed with lysates from HeLa cells co expressing FLAG epitope-tagged Tat (Tat-FLAG) and either wild-type Myc-PRMT6 or one of the domain deletion mutants. Surprisingly, the immunoprecipitation of Tat-FLAG revealed that the catalytic domain mutant of Myc-PRMT6 (Δ CD) was robustly co-immunoprecipitated (Figure 1B, lane Δ CD). This indicates that the catalytic domain, which is responsible for Tat methylation [7], is nonetheless dispensable for the interaction between PRMT6 and Tat. Similarly, the Myc-PRMT6 Δ C1 and Δ C2 mutants interacted with Tat-FLAG to a similar degree to wild-type Myc-PRMT6 (Figure 1B, lanes WT, Δ C1 and Δ C2). In contrast, neither the Myc-PRMT6 Δ N mutant nor the Δ C3 mutant could be efficiently co-immunoprecipitated in repeated experiments (Figure 1B, lanes Δ N and Δ C3), demonstrating that these regions are required for Tat interaction. The data therefore show that the termini of PRMT6, and not its catalytic domain, are the mediators of interaction with HIV-1 Tat.

The activation domain of Tat interacts with PRMT6

PRMT6 methylates Tat within its basic domain, also known as the arginine rich motif [7,12,13]. To determine if the basic domain is required and sufficient for the interaction between Tat and PRMT6, we similarly created domain deletion mutants in the plasmid expressing Tat-FLAG. Since the functional domains of Tat are well characterized [22], we thus created a panel of mutants (Figure 2A) that included two non-overlapping deletions of the activation domain (Δ 16, Δ CC), a deletion of the basic domain (Δ B) and a deletion of the domain encoded by the *tat* second exon (Δ SE).

Immunoprecipitations were performed with lysates from HeLa cells co expressing wild-type Myc-PRMT6 and either wild-type Tat-FLAG or one of the domain deletion mutants. Unexpectedly, immunoprecipitation of the Tat-FLAG basic domain deletion mutant detectably co-immunoprecipitated Myc-PRMT6 (Figure 2B, lane Δ B). The result clearly indicates that the basic domain of Tat is not absolutely critical for the interaction with PRMT6. The Tat-FLAG Δ SE mutant similarly interacted with Myc-PRMT6 (Figure 2B, lane Δ SE). In contrast, deletions made to the activation domain of Tat resulted in somewhat reduced (in the case of the Δ 16 mutant) or abrogated (Δ CC mutant) interaction with Myc-PRMT6 (Figure 2B, lanes Δ 16 and Δ CC). The data therefore suggest that the Tat activation domain, and not the basic domain, is the important mediator of interaction with PRMT6.

To confirm the results revealed by the domain deletion mutants, we repeated the immunoprecipitation experiment with Tat-FLAG mutants in which amino acid substitutions were introduced into the activation and



basic domains. Three Tat-FLAG mutants were created (Figure 3A), one in which amino acids Glu-2, Asp-5 and Glu-9 were mutated to alanine residues (EDE mutant), another in which all the cysteine residues between amino acids 21 to 38 were mutated to serine residues (CS mutant), and one in which all the amino acids within the basic domain were mutated to glycine or alanine residues (NB mutant). Immunoprecipitations of the Tat-FLAG mutants in lysates from HeLa cells co expressing Myc-PRMT6 revealed that the EDE mutant could not efficiently interact with Myc-PRMT6 (Figure 3B), whereas the NB mutant remained able to interact (Figure 3C). Expression of the CS mutant in cell lysate samples was less than wild

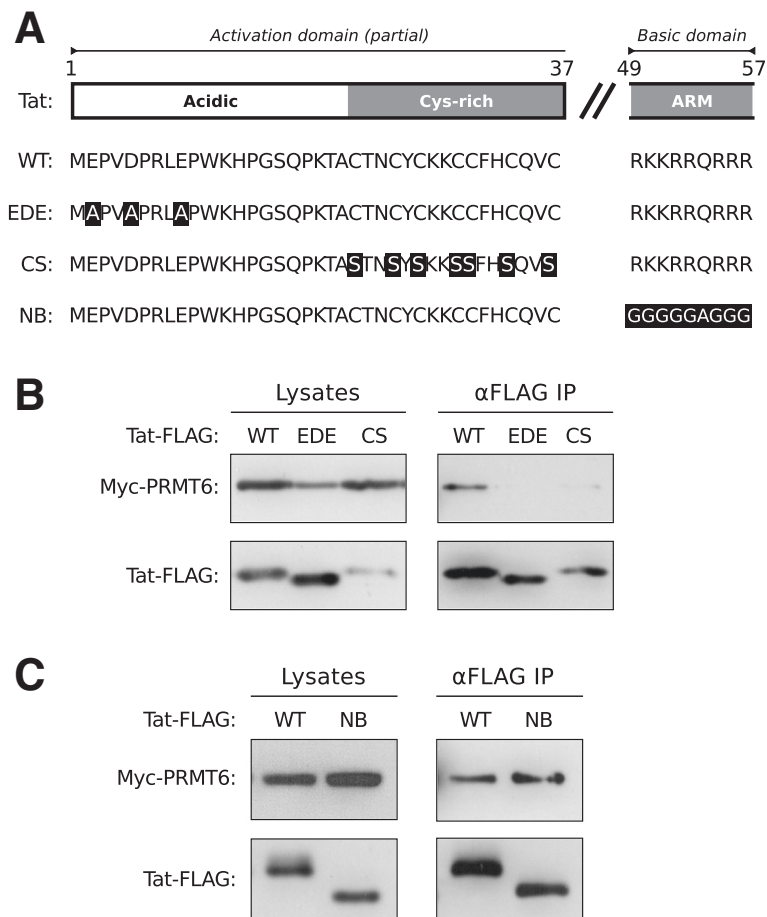


Figure 3 Acidic and cysteine residues within the Tat activation domain are required for interaction with PRMT6. (A) Schematic representation of the Tat activation domain from amino acids 1 to 37 and the basic domain from amino acids 49 to 57. The wild type (WT) amino acid sequence is shown using the single-letter amino acid code. Sequences of the acidic residues mutant (EDE), the cysteine residues mutant (CS) and the basic domain mutant (NB) are also shown, with substitution mutations indicated in reverse video. ARM, arginine rich motif. (B) Interactions between Myc epitope-tagged PRMT6 (Myc-PRMT6) and wild type, EDE mutant or CS mutant FLAG epitope-tagged Tat (Tat-FLAG) as determined by immunoprecipitation. HeLa cells were transfected to express Myc-PRMT6 with either wild type Tat-FLAG (WT) or one of its mutants as indicated. Immunoprecipitations were performed on lysates prepared from transfected cells using anti-FLAG agarose beads (αFLAG IP). Cell lysates (left panel) and immunoprecipitates (right panel) were western blotted using anti-Myc and anti-FLAG antibodies. (C) The same experiment as in B was performed with the NB mutant of Tat-FLAG. Loading of cell lysates was normalized for equal amounts of co expressed *Renilla* luciferase in each sample. All data are representative of three independent experiments.

type Tat, so the effect of the cysteine to serine mutations on Tat interaction with PRMT6 remains to be conclusively determined. The amino acids mutated within the activation domain of the EDE mutant have been previously shown to be important for the transactivation function of Tat [23-25]. It is thus demonstrated that key amino acid residues within the activation domain of Tat are necessary not only for transactivation, but also for the interaction between Tat and PRMT6.

The A549 cell line naturally expresses low levels of PRMT6

Previous investigations of the effects of PRMT6 on HIV-1 replication have involved the use of cell lines that

robustly express endogenous levels of PRMT6 protein [12,13,19,20]. Consequently, the degree of influence of this endogenous population of PRMT6 on investigations requiring the transfection of ectopic PRMT6 is unknown. We reasoned that human cell lines that naturally express no or low levels of PRMT6 might make ideal models for exploring the host-pathogen relationship between PRMT6 and HIV-1. To this end, we interrogated the UniGene expressed sequence tag (EST) profile database [26] for candidate tissue types in which PRMT6 ESTs were infrequently reported. When classified by health state, lung tumor and lymphoma tissue were reported to have zero transcripts per million (TPM) of *PRMT6* transcripts, compared to 87 TPM for cervical tumor tissue and 58 TPM

for kidney tumor tissue (Table 1). Furthermore, normal lung tissue was reported to express 14 TPM of *PRMT6* transcripts compared to 61 TPM for normal cervical tissue and 47 TPM for normal kidney tissue (Table 1). In contrast, both lung tumor and lymphoma tissue express higher levels of protein arginine methyltransferase 1 (PRMT1), a relatively abundant methyltransferase [14], at 300 and 432 TPM respectively (Table 1).

Guided by the *PRMT6* EST data, we therefore obtained human cell lines derived from lung tumor and lymphoma tissue. We chose the A549 human cell line [27], derived from an adenocarcinoma of alveolar basal epithelium origin, and the BJAB human lymphoblastoid cell line [28], derived from an Epstein-Barr virus-negative Burkitt's lymphoma, respectively. Western blotting for *PRMT6* showed that A549 cells had undetectable levels of the protein, in contrast to BJAB and HeLa cells, while all three cell lines had readily detectable *PRMT1* protein (Figure 4A). Relative quantification by reverse transcription polymerase chain reaction (PCR) revealed a 5.9-fold deficit of *PRMT6* mRNA transcripts in A549 cells when compared to HeLa cells (Figure 4B). This was determined using Pfaffl's method of mRNA quantification [29], in which the relative expression ratio of *PRMT6* transcripts between A549 and HeLa cells was normalized to the expression of *GAPDH* transcripts. In contrast, a similar determination of *PRMT1* mRNA levels revealed only a 1.8-fold difference between A549 and HeLa cells (Figure 4B). We therefore demonstrate that the A549 cell line naturally expresses undetectable levels of *PRMT6* protein due to a dearth of *PRMT6* mRNA.

When we transfected A549 cells to express Tat-FLAG (250 ng of plasmid) with or without Myc-*PRMT6* (250 ng of plasmid), we observed a strong increase in Tat-FLAG protein steady-state levels in the presence of Myc-*PRMT6* (Figure 4C). We have previously demonstrated that catalytically-active *PRMT6* can increase the protein half-

life of Tat in HeLa cells in a manner dependent on arginine methylation [13]. We therefore aimed to determine if a similar phenomenon was observable in A549 cells, which would indicate that ectopically-expressed *PRMT6* is biologically active in the A549 cell line. Cells transfected to express Tat-FLAG (1 µg of plasmid) with or without coexpressing Myc-*PRMT6* (1 µg of plasmid) were treated with cycloheximide (CHX) in order to arrest protein translation. At various time points post-treatment, transfected cells were harvested and assayed by western blot for Tat-FLAG, Myc-*PRMT6* and endogenous β-tubulin expression. As similarly observed in Figure 4C, co expression of Myc-*PRMT6* greatly enhanced the steady-state levels of Tat-FLAG just prior to CHX treatment (0 h time point), levels that were sustained by Myc-*PRMT6* over the time course (Figure 4D). In contrast, Tat-FLAG levels in the absence of Myc-*PRMT6* co expression quickly reduced to undetectable levels (Figure 4D). Endogenous β-tubulin protein levels remained stable throughout the time course. A plot of the Tat-FLAG band intensities over time enables calculation of Tat-FLAG protein half-lives in either the presence or absence of Myc-*PRMT6* [13]. Such a calculation revealed that Myc-*PRMT6* increased the protein half-life of Tat-FLAG by 5.6-fold (from 3.5 h to 19.5 h; Figure 4E). This suggested that ectopically-expressed *PRMT6* can robustly increase Tat protein stability in A549 cells, thereby confirming that Myc-*PRMT6* is biologically effective in A549 cells.

PRMT6 does not down regulate HIV-1 gene expression in A549 cells

We used the A549 cell line to confirm the hypothesis that overexpression of *PRMT6* down regulates Tat transactivation function. We firstly overexpressed Myc-*PRMT6* in A549 cells cotransfected with a *Photinus* luciferase reporter plasmid containing the long terminal repeat (LTR), the HIV-1 promoter. This allowed us to test the effect of *PRMT6* on basal transcription. When normalized for constitutive *Renilla* luciferase expressed from a SV40 promoter, we observed no change in basal transcription from the LTR in the presence of either 50 ng ($p = 0.96$, two-tailed Student's *t* test) or 250 ng of Myc-*PRMT6* plasmid ($p = 0.30$; two-tailed Student's *t* test) compared to the no Myc-*PRMT6* control (Figure 5). Next we tested the effect of *PRMT6* on Tat-mediated transactivation of the LTR. Previous studies have employed HEK293T (human embryonic kidney) [7] or HeLa cells [12] to test this hypothesis, using 100 ng of Tat expression plasmid along with 0.5 µg or 1 µg of *PRMT6* expression plasmid [7] or between 0.05 µg and 0.5 µg of *PRMT6* plasmid [12]. In contrast, we transfected A549 cells with 0.15 ng and 0.5 ng of Tat-FLAG expression plasmid either with or without 50 ng of the wild type Myc-*PRMT6* plasmid. This represents either a 333-fold or 100-fold molar excess of Myc-*PRMT6* plasmid compared to Tat-FLAG plasmid, respectively. It is important to note that

Table 1 Expressed sequence tag data (shown as transcripts per million) for the *PRMT6* and *PRMT1* genes in selected tissue types

Tissue	Transcripts per million	
	PRMT6	PRMT1
<i>By health state</i>		
Cervical tumor	87	174
Kidney tumor	58	145
Lung tumor	0	300
Lymphoma	0	432
<i>By body site</i>		
Cervix	61	185
Kidney	47	75
Lung	14	179

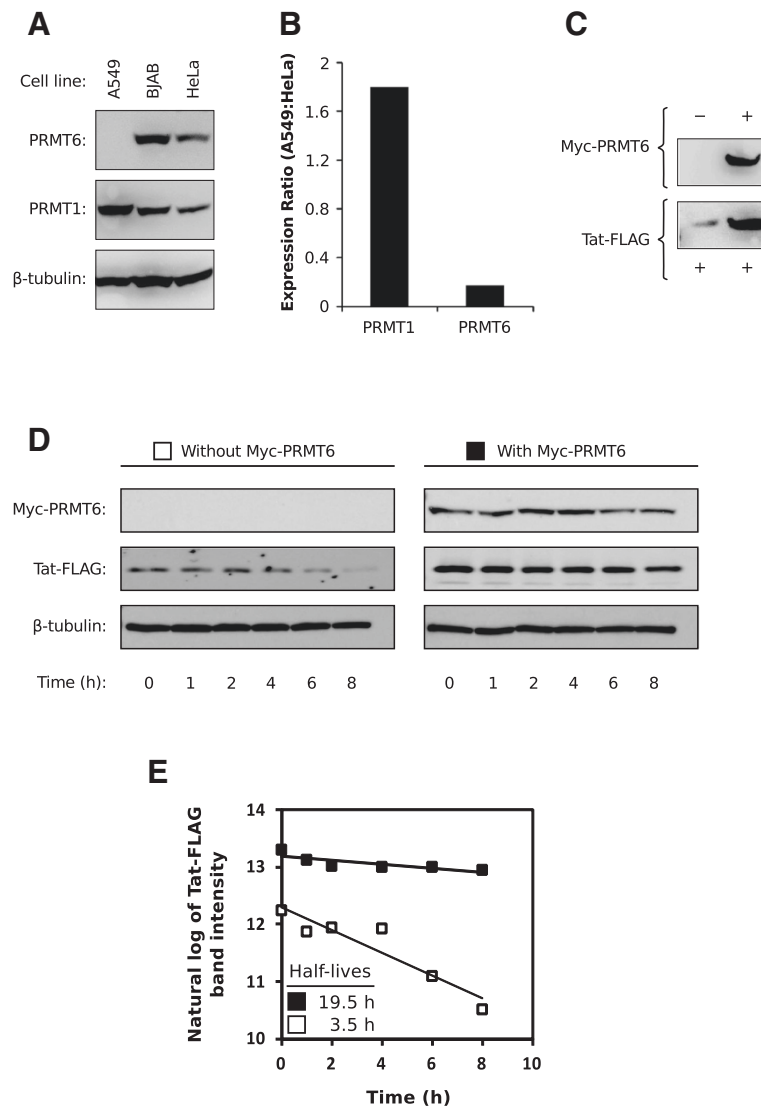
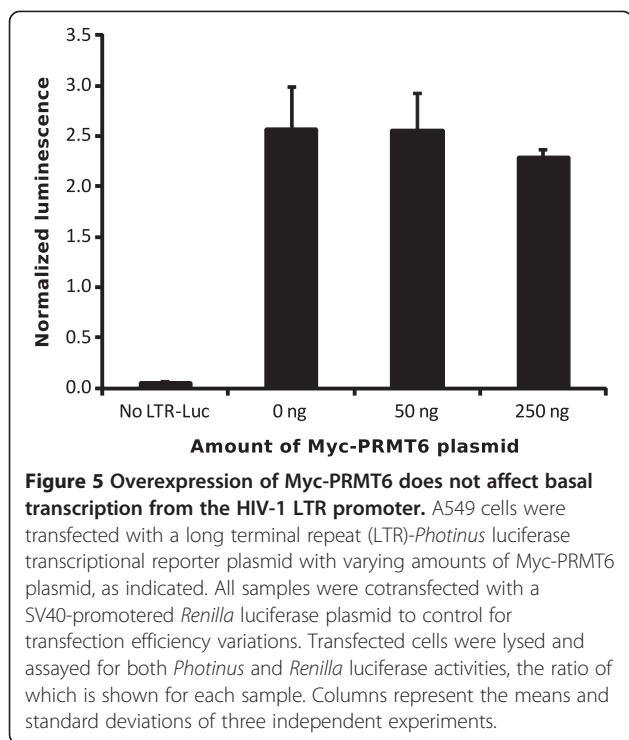


Figure 4 The A549 cell line does not express detectable levels of PRMT6 protein. (A) Western blot of cell lysates from the A549, BJAB and HeLa cell lines detected with anti-PRMT6, anti-PRMT1 and anti- β -tubulin antibodies as indicated. (B) Relative expression ratios of *PRMT1* and *PRMT6* mRNA transcripts in A549 versus HeLa cells. Total RNA were extracted from A549 and HeLa cells before being reverse transcribed into cDNA using random primers. Quantitative PCR was then performed on the cDNA samples using primers specific for *PRMT1*, *PRMT6* and *GAPDH* transcripts. Relative expression ratios for *PRMT1* and *PRMT6* were calculated according to the method of [29]. (C) Ectopic Myc-PRMT6 increases the steady state levels of Tat-FLAG protein in A549 cells. Western blotting was performed on A549 cells transfected to express Tat-FLAG with (+) or without (-) Myc-PRMT6. Proteins were detected with anti-FLAG and anti-PRMT6 antibodies, respectively. Loading of cell lysates was normalized for equal amounts of co expressed *Renilla* luciferase in each sample. (D) A549 cells transfected to express Tat-FLAG with or without Myc-PRMT6 were treated with cycloheximide and harvested at 0, 1, 2, 4, 6 and 8 h post-treatment. Western blotting was performed on total protein-equalized lysates. β -tubulin levels demonstrate equal sample loadings. (E) The Tat-FLAG band intensities in panel D were quantified, and their natural log values were plotted as a function of time. Values for Tat-FLAG co expressed with Myc-PRMT6 are indicated by the black boxes and values for Tat-FLAG expressed alone by the white boxes. The calculated Tat-FLAG protein half-lives are shown in the inset.

addition of an amino-terminal Myc tag to PRMT6 does not affect its functions [7,12,13,19,20,30,31]. We cotransfected cells with the LTR-*Photinus* luciferase reporter to indicate the effects of PRMT6 on Tat transactivation, and the SV40 promoter-*Renilla* luciferase plasmid to control for variations in transfection efficiencies and to gauge non-specific effects on plasmid expression.

When normalized for *Renilla* luciferase expression, we saw no evidence in A549 cells of PRMT6-mediated down regulation of Tat transactivation with either 0.15 ng of Tat-FLAG plasmid ($p = 0.39$, one-tailed Student's t test) or 0.5 ng of Tat-FLAG plasmid ($p = 0.27$, one-tailed Student's t test; Figure 6A). To discount cell line-specific influences on the results, we repeated the experiment in HeLa cells.



We again observed no PRMT6-mediated down regulation of normalized transactivation in HeLa cells with either 0.15 ng or 0.5 ng of Tat-FLAG plasmid ($p = 0.35$ and $p = 0.34$, respectively, one-tailed Student's t test; Figure 6B). Importantly, there were no statistically significant differences in total-protein normalized *Renilla* luciferase expression between samples in either the A549 (Figure 6C) or HeLa (Figure 6D) cell lines ($p > 0.05$, two-tailed Welch's t test), indicating that the various plasmids transfected in each experiment did not adversely affect overall expression levels. We therefore found, in contrast to previously published results [12], that PRMT6 has no statistically significant effects on Tat-mediated transactivation in either A549 or HeLa cells.

HIV-1 produced in A549 cells overexpressing PRMT6 are competent for infection

The prevailing hypothesis is that PRMT6 is a negative regulator of HIV-1 replication, targeting not only Tat [7,12], but also the HIV-1 Rev [19] and nucleocapsid proteins [20]. We wanted to determine if PRMT6 overexpression will affect HIV-1 infectivity in our A549 cell model. A549 cells were transfected with either empty vector, wild type Myc-PRMT6 plasmid or a plasmid expressing a mutant of Myc-PRMT6 whose V86K and D88A amino acid substitutions render it catalytically inactive [7]. These cells were cotransfected with pGCH/EGFP, a proviral expression plasmid which produces HIV-1 from a CMV immediate-early promoter [13] and which contains the *EGFP* gene within the *nef* coding region of the genome. The cells were also

cotransfected with a VSV-G plasmid to enable pseudotyping of virus particles. Expression of EGFP in target cells inoculated with this pseudotyped virus indicates productive infection.

After confirming expression of Myc-PRMT6 in the A549 virus producer cells (Figure 7A), both HeLa and A549 cells were exposed to equal amounts of virus collected from the producer cells and were subsequently quantified for EGFP expression by flow cytometry (Figure 7B). When expressed relative to the empty vector control, we saw no difference in EGFP expression between the HeLa cells infected with virus from the wild type Myc-PRMT6-expressing producer cells and virus from the mutant Myc-PRMT6-expressing producer cells ($p = 0.52$, two-tailed Student's t test; Figure 7C). Similar results were observed when A549 cells were used as target cells ($p = 0.39$, two-tailed Student's t test; Figure 7C). We therefore infer from the data that overexpression of Myc-PRMT6 in A549 virus producer cells has no impact on the subsequent infectivity of virus thus produced.

Conclusions

The interaction between HIV-1 Tat and PRMT6

PRMT6 was described by Boulanger and co-workers as a negative regulator of HIV-1 Tat transactivation [7]. The mechanism of action they proposed involves PRMT6-catalyzed methylation of Tat within its basic domain, which subsequently disrupts formation of the Tat-TAR-cyclin T1 ternary structure critically required for activating transcription at the HIV-1 proviral promoter [7,12]. Here we provide further insight into this proposed mechanism by demonstrating that the amino and carboxyl termini of PRMT6 interact with the activation domain of Tat. We show that the catalytic domain of PRMT6, while required for Tat methylation [7] and Tat stabilization in cells [13], is not required for interacting with Tat (Figure 1). We also demonstrate that the basic domain of Tat is dispensable for the interaction with PRMT6 (Figure 2) despite being the target domain of PRMT6-mediated methylation [7,13]. Instead, it is the amino terminal of the Tat activation domain that is essential for binding to PRMT6 (Figure 3). However, the fact that the Tat-FLAG EDE mutant could not interact with Myc-PRMT6 (Figure 3B), but the Tat-FLAG $\Delta 16$ mutant could interact (Figure 2B), suggests there may be a weaker interaction between the Tat basic domain and PRMT6 (most likely during the catalysis of Tat methylation) that is sterically hidden by the Tat activation domain.

How both the amino and carboxyl ends of PRMT6 interact with Tat is currently unclear. Finding the solution to this problem, however, is confounded by a lack of crystal structure data for PRMT6. Nonetheless, a crystal structure has been resolved for rodent PRMT1 [32], a highly conserved methyltransferase from the same family

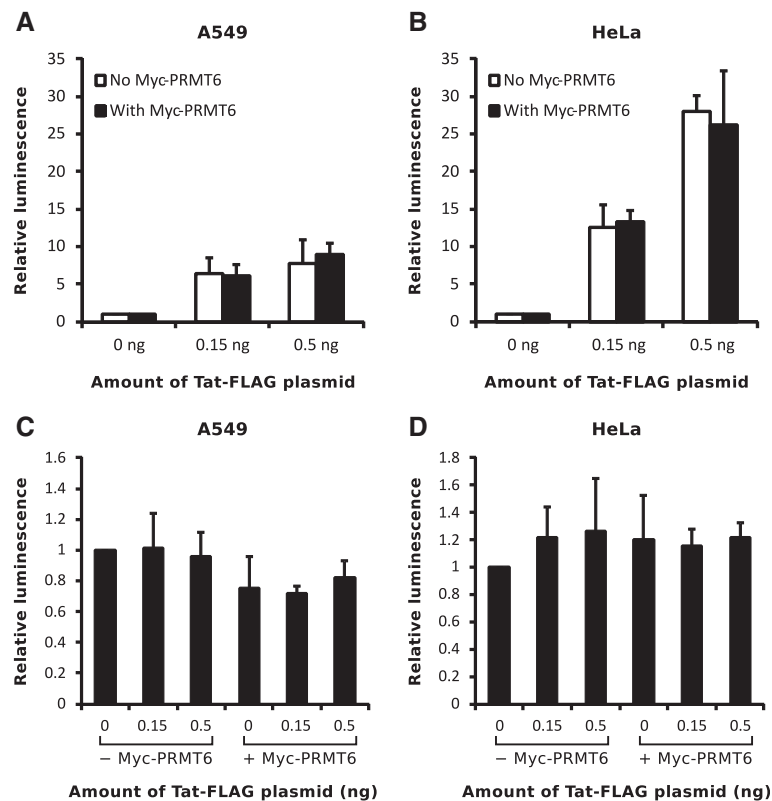
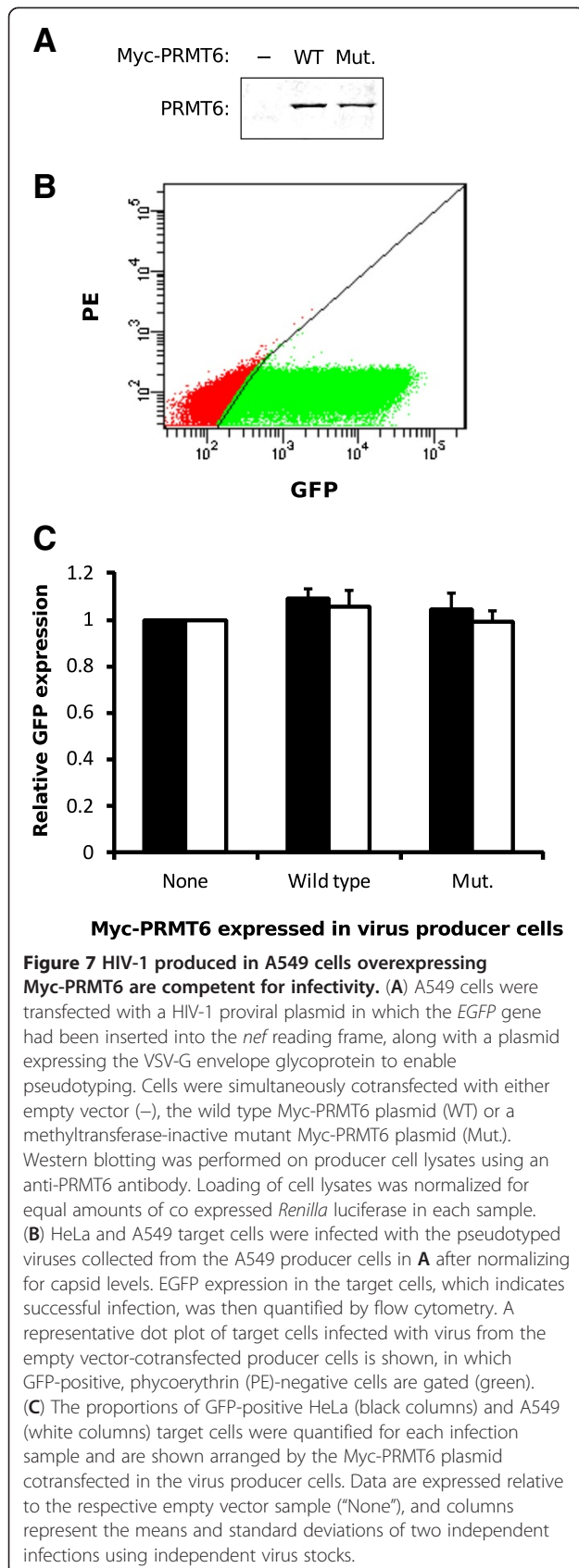


Figure 6 Overexpression of Myc-PRMT6 does not alter Tat-FLAG mediated transactivation in either A549 or HeLa cells. (A) A549 cells were transfected with a long terminal repeat (LTR)-*Photinus* luciferase transactivation reporter plasmid along with varying amounts of Tat-FLAG plasmid, as indicated, and either with (black columns) or without (white columns) Myc-PRMT6 plasmid. All samples were cotransfected with a SV40-promoter *Renilla* luciferase plasmid to control for transfection efficiency and assay variations. Transfected cells were lysed and assayed for both *Photinus* and *Renilla* luciferase activities, the ratio of which is shown for each sample expressed relative to the "0 ng Tat-FLAG" sample. Columns represent the means and standard deviations of four independent experiments. (B) The same experiment as in A was performed in HeLa cells. Columns represent the means and standard deviations of three independent experiments. (C) Overexpression of PRMT6 does not alter overall plasmid expression. The *Renilla* luciferase activities from A were normalized to total lysate protein concentrations before being expressed relative to the "0 ng Tat-FLAG without Myc-PRMT6" sample. Samples in which Myc-PRMT6 plasmid was (+) or was not (-) cotransfected are indicated. Columns represent the means and standard deviations of four independent experiments. (D) The same determinations as in C were performed with the samples from B. Columns represent the means and standard deviations of three independent experiments.

as PRMT6. The structural information for PRMT1 suggests that the amino and carboxyl termini are in opposition to each other on the same plane of the molecule [32]. If the same arrangement is true for human PRMT6, then it is plausible that both termini can simultaneously interact with Tat. This would ascribe novel roles to these regions of PRMT6, which have hitherto been functionally undefined.

The requirement for the Tat activation domain to mediate the interaction between Tat and PRMT6 is an intriguing discovery. The activation domain of Tat is critical for binding to cyclin T1 as the Tat-TAR-cyclin T1 complex assembles [1,33]. It is conceivable that binding of PRMT6 to the Tat activation domain may occlude subsequent interactions between Tat and cyclin T1. As the interaction between Tat and PRMT6 does not appear to critically require the Tat basic domain (Figure 2), this occlusion may occur either before or after the basic domain

binds to TAR during the initial phases of transactivation. Recently, Sobhian and colleagues have shown that Tat can assemble functionally distinct complexes in cells, one which is transcriptionally active during HIV-1 transactivation (Tatcom1) and another which increases the available pool of the P-TEFb transcription factor complex (Tatcom2) [34]. Both of these assemblages require the binding of Tat to cyclin T1 [34]. It is possible that PRMT6 may limit the formation of such assemblages when bound to the Tat activation domain. However, our data suggest this to be unlikely. As neither basal transcription (Figure 5) nor Tat-mediated gene expression (Figure 6) were inhibited by the overexpression of PRMT6, it is likely that formation of a Tat-pTEFb complex is more favorable over a Tat-PRMT6 interaction. Further experiments, including protein binding competition assays, are required to fully explore this hypothesis.



The A549 cell line as a model for PRMT6 function

The role of PRMT6 in HIV-1 biology is worthy of investigation, as at least three viral proteins have been demonstrated to be directly methylated by this single methyltransferase [7,19,20]. The need to develop new investigative tools and models for PRMT6 function is therefore warranted. We show here that the A549 human alveolar adenocarcinoma cell line naturally expresses undetectable levels of PRMT6 protein (Figure 4A). The absence of PRMT6 detection was attributed to the expression of low levels of *PRMT6* mRNA in the cell line (Figure 4B), corroborating data inferred from the UniGene EST profile database (Table 1) [26]. We therefore believe that the A549 cell line can be used as a model for studying the activities of PRMT6 on not only HIV, but also on other pathogens [35] and on tumorigenesis [36].

Our experiments indicated that Myc-PRMT6 increases steady-state levels of Tat-FLAG in A549 cells (Figure 4C), and that catalytically-active Myc-PRMT6 increases the protein half-life of Tat-FLAG (Figure 4D and 4E), as previously observed in HeLa cells [13]. Construing these data as evidence for biological activity of ectopic PRMT6 in A549 cells, we therefore used the A549 cell line to test two aspects of the role of PRMT6 in HIV-1 replication. Firstly, we tested the ability of PRMT6 to down regulate Tat transactivation function [7,12]. Surprisingly, we discovered that ectopically expressing PRMT6 in A549 cells (in the form of catalytically active Myc-PRMT6) had no statistically significant impact on Tat transactivation function using an LTR-luciferase reporter (Figure 6A). Importantly, we used very low amounts of Tat expression plasmid in the experiments such that the molar ratio of Myc-PRMT6 to Tat-FLAG was up to 333-fold, an amount with which any effects of PRMT6 on Tat function should have been readily observable. When we repeated the experiments in HeLa cells, in which a negative effect of PRMT6 on Tat function has been previously observed [12], we again saw no statistically significant decrease in Tat transactivation despite the 333-fold molar excess of Myc-PRMT6 to Tat-FLAG (Figure 6B).

It is unclear why differing results were observed between this study and that of Xie and colleagues [12]. One explanation could be the amount of PRMT6 expression plasmid used in the experiments. While we transfected 50 ng of PRMT6 plasmid per 2-cm² well in our experiments, Xie and colleagues transfected up to 0.5 µg of PRMT6 plasmid per 3.8-cm² well. Endogenous PRMT6 is known to suppress gene transcription by regulating histone post-translational modifications [15-18]. It is possible that ectopic PRMT6 may do the same, so it is therefore important to control for changes in plasmid transcription rates in experiments involving the transfection of PRMT6 expression plasmids. We observed no statistically significant negative effects on transcription in our experiments as determined with a SV40-promoter *Renilla* luciferase

transfection control (Figure 6C and D). Unfortunately, the impact of PRMT6 transfection is unclear in the experiments of Xie and co-workers. Another point of difference is the clone of Tat used in the respective studies. While we used 101-amino acid Tat derived from the BH10 clone of HIV-1 (GenBank, accession number M15654), Xie and colleagues used 101-amino acid Tat derived from the HXB2 clone [37-39]. The amino acid sequences of these two clones differ in the auxiliary and second exon domains. It is possible that clonal differences of the Tat protein may account for the observed discrepancies between the two studies.

Our second test in the A549 cell line model was to assess the effect of PRMT6 on HIV-1 infectivity. This approach models the impact of PRMT6 on the viral Tat, Rev and nucleocapsid proteins, all of which play important roles during the late phase of the HIV-1 life cycle. We observed no differences in infectivity of HIV-1 produced in A549 cells cotransfected to express either an empty vector, wild type Myc-PRMT6 or a catalytically-inactive mutant of Myc-PRMT6 (Figure 7). In addition, virus levels in the culture supernatants were similar in all experiments (data not shown) suggesting that Rev, which is required for structural protein synthesis, was not inhibited. This contrasts with a study by Xie and colleagues, where HIV-1 produced in HEK293T cells in which PRMT6 was knocked down (by constitutively-expressed siRNA) was found to replicate faster in target cells within which PRMT6 was also constitutively knocked down [12]. The target cells chosen in that study were of the Jurkat lymphoblastoid cell line, a biologically more relevant target compared to the HeLa cells used in this study (Figure 7). However, it is important to note that the molecular details of PRMT6's impact on HIV-1 have all been elucidated in HeLa or similar tissue culture lines [12,13,19,20]. Furthermore, long-term stable knock down of PRMT6 by RNA interference has an unknown effect on general cellular gene expression, especially on those genes whose expression is controlled by PRMT6-mediated methylation of histones [16,17,31,36]. It is therefore difficult to distinguish between direct (via viral proteins) and indirect (via cellular gene expression) effects of PRMT6 knock down on virus replication.

The data presented in this study prompt a revisit of the hypothesis that PRMT6 is an anti-HIV restriction factor. There is good evidence that PRMT6 can negatively influence HIV-1 replication [12], but neither its degree nor its directness is completely known. In A549 cells, a cell line that naturally expresses undetectable amounts of PRMT6 protein, there is little impact of PRMT6 overexpression on Tat-mediated transactivation or viral infectivity. In contrast, in cells that robustly express PRMT6, within which PRMT6 is constitutively knocked down by siRNA, there appears to be a significant impact on HIV-1 replication

[12]. Further work is needed to determine which has the greater influence on HIV-1: the direct interactions between PRMT6 and viral proteins or the regulation of cellular gene expression by PRMT6. While PRMT6 may influence the pathogenic effects of Tat [40,41], we believe that further evidence is required before PRMT6 can firmly be considered a direct HIV-1 restriction factor.

Methods

Cell culture and transfections

The HeLa cell line was obtained from the ATCC biological resource center (ATCC number CCL-2). The A549 alveolar adenocarcinoma cell line [27] and the BJAB human lymphoblastoid cell line [28] were gifts from Prof. Andreas Suhrbier (Queensland Institute of Medical Research, Brisbane, Australia). All cells were cultured in RPMI 1640 medium supplemented with 100 U · ml⁻¹ penicillin, 100 mg · ml⁻¹ streptomycin and 10% [vol/vol] fetal bovine serum (Sigma-Aldrich Corporation), and incubated at 37°C under a humidified atmosphere of 5% CO₂ in air. Transfections were performed with X-tremeGENE HP transfection reagent (Roche Diagnostics Corporation) according to the manufacturer's instructions. Transfections were performed in 6-cm dishes (28 cm² dish surface area) for immunoprecipitation and protein translation arrest experiments, in 6-well plates (9.6 cm² well surface area) for western blotting, and in 24-well plates (2 cm² well surface area) for transactivation assays.

Plasmids

The plasmid expressing the two-exon, 101 amino-acid, BH10 clone of Tat fused to the FLAG epitope (pcDNA3.1/Tat-FLAG) was a gift from Moncef Benkirane, Institut de Génétique Humaine, Montpellier, France. The plasmids expressing fusions between the Myc epitope tag and wild type PRMT6 (pMyc-PRMT6) or methyltransferase-deficient mutant PRMT6 (pMyc-PRMT6 mut) were gifts from Stéphane Richard, McGill University, Montréal, Canada. The mutant contains V86K and D88A amino acid mutations compared to wild type PRMT6 (GenBank, accession number BC073866). The Myc-PRMT6 domain deletion mutants were created by inverse PCR using primers as described in Table 2 and using pMyc-PRMT6 as template. The Tat-FLAG domain deletion and substitution mutants were similarly created by inverse PCR using primers described in Table 2 and using pcDNA3.1/Tat-FLAG as template. Creation of the NB mutant of Tat-FLAG has been described elsewhere [42].

The Tat transactivation *Photinus* luciferase reporter pGL3-LTR consists of the long terminal repeat from HIV-1 clone SF2 inserted into pGL3-basic (Promega Corporation) via *Bam* HI and *Hind* III restriction enzyme sites. The LTR spans nucleotides -180 to +81, relative to the start of transcription. The *Renilla* luciferase plasmid

pRL-SV40 (Promega) was used as a transfection control in experiments where indicated. pGCH/EGFP was derived from the pGCH proviral vector [13]. Firstly, the 3' LTR region containing the *nef* open reading frame was subcloned from pGCH to pUC19 via *Bam* HI and *Xba* I restriction sites. Secondly, the *nef* start codon was mutated to an *Age* I restriction site by inverse PCR before the *EGFP* gene (Clontech Laboratories) was inserted via the *Age* I restriction site and a pre-existing *Xho* I restriction site. Finally, the *EGFP*-containing 3' LTR was subcloned back into pGCH via *Bam* HI and *Xba* I restriction sites. pCMV/VSV-G, which expresses the vesicular stomatitis virus envelope glycoprotein, was a kind gift from Assoc. Prof. Ian Mackay (The University of Queensland, Brisbane, Australia).

Immunoprecipitations and western blot

For the immunoprecipitation experiments, HeLa cells in 6-cm dishes were transfected with 4 µg of Myc-PRMT6 plasmid along with 2 µg of Tat-FLAG wild-type or mutant plasmids. Cells were harvested 24 h posttransfection with phosphate-buffered saline containing 0.5 mM EDTA. The cells were washed in phosphate-buffered saline and lysed in lysis buffer (50 mM Tris, pH 7.4, 150 mM NaCl, 1 mM EDTA, protease inhibitor cocktail [Roche], 0.5% [wt/vol] Triton X-100). The lysates were centrifuged at 1000 × g to pellet debris, after which supernatants were collected. Lysate total protein concentrations were determined by the Bradford method [43] and, where applicable, ectopically expressed *Renilla* luciferase was quantified with the BioLux Gaussia Luciferase Flex Assay Kit (New England Biolabs). The lysates were boiled in Laemmli sample buffer [44] and electrophoresed in a denaturing polyacrylamide gel (sodium dodecyl sulfate-polyacrylamide gel electrophoresis [SDS-PAGE]) under reducing conditions. Proteins were electroblotted to a polyvinylidene fluoride

membrane (Millipore Corporation) using a semidry transfer system (Bio-Rad Laboratories).

Tat-FLAG and its mutants were detected with rabbit anti-DYKDDDDK antibody (Cell Signaling Technology). Myc-PRMT6 and its mutants were detected with rabbit anti-Myc-Tag clone 71D10 antibody (Cell Signaling). Endogenous PRMT6 was detected with rabbit anti-PRMT6 antibody (LifeSpan Biosciences). PRMT1 was detected with rabbit anti-PRMT1 antibody (Epitomics). β-tubulin was detected with mouse anti-β-tubulin clone 2-28-33 antibody (Sigma-Aldrich), followed by horseradish peroxidase (HRP)-conjugated goat anti-mouse antibody (Life Technologies Corporation). Rabbit antibodies were detected with HRP-conjugated goat anti-rabbit antibody (Life Technologies). Bands were visualized with Super Signal West Pico chemiluminescent substrate (Pierce Biotechnology).

Protein translation arrest

A549 cells growing in 6-cm dishes were transfected with 1 µg of Tat-FLAG plasmid either with or without 1 µg of Myc-PRMT6 plasmid. Dishes were treated with 60 µg · ml⁻¹ of cycloheximide (Sigma-Aldrich) at 24 h posttransfection. Cells were harvested and lysed at 0, 1, 2, 4, 6 and 8 h post-treatment and lysates equivalent in total protein amounts were assayed by western blot for Tat-FLAG, Myc-PRMT6 and endogenous β-tubulin expression. Visualized bands were captured with an Image Quant LAS 500 imager (GE Healthcare) and Tat-FLAG band (pixel) intensities were quantified with ImageJ (version 1.39). The protein half-life of Tat-FLAG was calculated using the formula described previously [13].

Quantitative RT-PCR

HeLa and A549 cells grown in 10-cm dishes were washed with phosphate-buffered saline before their total RNA were extracted with TRIzol reagent (Life Technologies) as per the manufacturer's instructions. The total

Table 2 Oligonucleotide sequences of inverse PCR primers used to construct Myc PRMT6 and Tat-FLAG mutants

Wild type	Mutant	Forward primer ^a	Reverse primer ^a
Myc-PRMT6	ΔN	acggctactggacgtggg	cgaattcccgtgttcag
	ΔCD	gcctccgccgagctcttc	cttgctctgcagtgctg
	ΔC1	cagcgctttgctcagcta	cggcaggagaagaccgc
	ΔC2	gcgctcctctacctgaac	tggacgagccagcacgt
	ΔC3	tgagaattcctgcagatccag	ctgtttccagtgatggcc
Tat-FLAG	Δ16	cagcctaaaactgctgtacc	catggtggcaagcttaagt
	ΔCC	aggaagaagcggagacag	agcagttttaggctgacttc
	ΔB	cctcctaaggcagtcagac	gccatagagatgcctaagg
	ΔSE	ggaggcgattataaggacga	ttgctttgatagagaaactt
	EDE	tcctagactagcgccttg	gctactggcgccatgg
	CS	tcttctttcattccaagtcttct	cttttagaataggaattggtagaagca

^aSequences are written 5' to 3'.

RNA were reverse transcribed with random hexamers and Superscript III MMLV RT (Life Technologies) according to the manufacturer's instructions. *PRMT1*, *PRMT6* and *GAPDH* transcripts in the cDNA were measured by quantitative PCR using Platinum SYBR Green qPCR supermix (Life Technologies) on the Rotor-Gene Q (QIAGEN). The primers used were primers f1 and r1 for *PRMT1*, primers f2 and r2 for *PRMT6*, and primers GAPDH-f and GAPDH-r for *GAPDH* as described in [36]. Calculation of *PRMT1* and *PRMT6* relative expression ratios followed the method of Pfaffl, where HeLa cells were considered the "control", A549 cells the "sample", and the GAPDH transcript as the "reference gene" as defined therein [29].

Transactivation assay

For the basal transcription assay, A549 cells growing in 24-well plate wells were cotransfected with 1 µg of pGL3-LTR and 100 ng of pRL-SV40, with or without 50 ng or 250 ng of pMyc-PRMT6. For the Tat-mediated transactivation assay, HeLa or A549 cells growing in 24-well plate wells were cotransfected with 50 ng of pGL3-LTR, 50 ng of pRL-SV40, and either 0 ng, 0.15 ng or 0.5 ng of pcDNA3.1/Tat-FLAG, with or without 50 ng of pMyc-PRMT6. Cells were harvested 24 h post-transfection using Glo Lysis Buffer (Promega) as per the manufacturer's instructions. *Photinus* luciferase was quantified with the Steady-Glo Luciferase Assay System (Promega), and *Renilla* luciferase was quantified with the BioLux Gaussia Luciferase Flex Assay Kit (New England Biolabs), as per the manufacturers' instructions. Total protein concentrations in lysates were quantified by the Bradford method [43].

Virus production, infection and flow cytometry

A549 cells in 10-cm dishes were transfected with 5 µg of pGCH/EGFP, 2.5 µg of pCMV/VSV-G and 2.5 µg of either pcDNA3.1 ("empty vector"), pMyc-PRMT6 or pMyc-PRMT6 mut. Virus particles in the culture media were collected 48 h post-transfection and quantified for viral capsid levels by ELISA (Zeptomatrix Corporation). HeLa cells growing in 6-well plates at 2×10^5 cells per well were infected with 20 ng per well (capsid equivalent) of virus in the presence of 8 µg · ml⁻¹ hexadimethrine bromide. Cells were harvested 42 h post-infection with phosphate-buffered saline containing 0.5 mM EDTA (EDTA/PBS) before being fixed with 0.5% [wt/vol] formaldehyde for 5 min. Cells were washed and resuspended in EDTA/PBS in order to analyze EGFP expression with a LSR Fortessa flow cytometer (Becton, Dickinson and Company). Cells were gated on side-scatter and forward-scatter parameters and excited for fluorescence with the 488 nm and 561 nm light sources.

Statistical analyses

Hartley's test was used to determine homoscedasticity (equivalence of variance) between data sets. Student's *t* test was used to evaluate null hypotheses for homoscedastic data, while Welch's *t* test was used for heteroscedastic data. Rejection of null hypotheses occurred when $p < 0.05$.

Abbreviations

PRMT6: Protein arginine methyltransferase 6; CHX: Cycloheximide; LTR: Long terminal repeat; TAR: Transactivation response element.

Competing interests

The authors declare that they have no competing interests.

Authors' contributions

HS and ML made substantial contributions to conception and design of the experiments, acquisition of data, analysis and interpretation of the data, and have been involved in the drafting of the manuscript. AA, HJ, DL and TW provided critical feedback on experimental design and critically evaluated the manuscript for important intellectual content. DH made substantial contributions to conception and design of the experiments, analysis and interpretation of the data, has been involved in the drafting of the manuscript, provided critical feedback on experimental design, and critically evaluated the manuscript for important intellectual content. All authors read and approved the final manuscript.

Received: 11 March 2013 Accepted: 20 June 2013

Published: 24 June 2013

References

1. Wei P, Garber ME, Fang SM, Fischer WH, Jones KA: A novel CDK9-associated C-type cyclin interacts directly with HIV-1 tat and mediates its high-affinity, loop-specific binding to TAR RNA. *Cell* 1998, **92**:451–462.
2. Yang Z, Zhu Q, Luo K, Zhou Q: The 75K small nuclear RNA inhibits the CDK9/cyclin T1 kinase to control transcription. *Nature* 2001, **414**:317–322.
3. Barboric M, Lenasi T: Kick-starting HIV-1 transcription elongation by 75K snRNP deports TAR RNA. *Nat Struct Mol Biol* 2010, **17**:928–930.
4. D'Orso I, Frankel AD: RNA-mediated displacement of an inhibitory snRNP complex activates transcription elongation. *Nat Struct Mol Biol* 2010, **17**:815–821.
5. Hetzer C, Bisgrove D, Cohen MS, Pedal A, Kaehlcke K, Speyerer A, Bartscherer K, Taunton J, Ott M: Recruitment and activation of RSK2 by HIV-1 Tat. *PLoS One* 2007, **2**:e151.
6. Yedavalli VR, Jeang KT: Methylation: a regulator of HIV-1 replication? *Retrovirology* 2007, **4**:9.
7. Boulanger MC, Liang C, Russell RS, Lin R, Bedford MT, Wainberg MA, Richard S: Methylation of tat by PRMT6 regulates human immunodeficiency virus type 1 gene expression. *J Virol* 2005, **79**:124–131.
8. Van Duyne R, Easley R, Wu W, Berro R, Pedati C, Klase Z, Kehn-Hall K, Flynn EK, Symer DE, Kashanchi F: Lysine methylation of HIV-1 tat regulates transcriptional activity of the viral LTR. *Retrovirology* 2008, **5**:40.
9. Pagans S, Kauder SE, Kaehlcke K, Sakane N, Schroeder S, Dormeyer W, Triebel RC, Verdin E, Schnolzer M, Ott M: The Cellular lysine methyltransferase Set7/9-KMT7 binds HIV-1 TAR RNA, monomethylates the viral transactivator tat, and enhances HIV transcription. *Cell Host Microbe* 2010, **7**:234–244.
10. Sakane N, Kwon HS, Pagans S, Kaehlcke K, Mizusawa Y, Kamada M, Lassen KG, Chan J, Greene WC, Schnolzer M, Ott M: Activation of HIV transcription by the viral tat protein requires a demethylation step mediated by lysine-specific demethylase 1 (LSD1/KDM1). *PLoS Pathog* 2011, **7**:e1002184.
11. Hetzer C, Dormeyer W, Schnolzer M, Ott M: Decoding tat: the biology of HIV tat posttranslational modifications. *Microbes Infect* 2005, **7**:1364–1369.
12. Xie B, Invernizzi CF, Richard S, Wainberg MA: Arginine methylation of the human immunodeficiency virus type 1 tat protein by PRMT6 negatively affects tat interactions with both cyclin T1 and the tat transactivation region. *J Virol* 2007, **81**:4226–4234.
13. Sivakumaran H, van der Horst A, Fulcher AJ, Apolloni A, Lin MH, Jans DA, Harrich D: Arginine methylation increases the stability of human immunodeficiency virus type 1 tat. *J Virol* 2009, **83**:11694–11703.

14. Wolf SS: **The protein arginine methyltransferase family: an update about function, new perspectives and the physiological role in humans.** *Cell Mol Life Sci* 2009, **662**:2109–2121.
15. Guccione E, Bassi C, Casadio F, Martinato F, Cesaroni M, Schuchlantz H, Luscher B, Amati B: **Methylation of histone H3R2 by PRMT6 and H3K4 by an MLL complex are mutually exclusive.** *Nature* 2007, **449**:933–937.
16. Hyllus D, Stein C, Schnabel K, Schiltz E, Imhof A, Dou Y, Hsieh J, Bauer UM: **PRMT6-mediated methylation of R2 in histone H3 antagonizes H3 K4 trimethylation.** *Genes Dev* 2007, **21**:3369–3380.
17. Iberg AN, Espejo A, Cheng D, Kim D, Michaud-Levesque J, Richard S, Bedford MT: **Arginine methylation of the histone H3 tail impedes effector binding.** *J Biol Chem* 2008, **283**:3006–3010.
18. Kirmizis A, Santos-Rosa H, Penkett CJ, Singer MA, Vermeulen M, Mann M, Bahler J, Green RD, Kouzarides T: **Arginine methylation at histone H3R2 controls deposition of H3K4 trimethylation.** *Nature* 2007, **449**:928–932.
19. Invernizzi CF, Xie B, Richard S, Wainberg MA: **PRMT6 diminishes HIV-1 Rev binding to and export of viral RNA.** *Retrovirology* 2006, **3**:93.
20. Invernizzi CF, Xie B, Frankel FA, Feldhammer M, Roy BB, Richard S, Wainberg MA: **Arginine methylation of the HIV-1 nucleocapsid protein results in its diminished function.** *AIDS* 2007, **21**:795–805.
21. Frankel A, Yadav N, Lee J, Branscombe TL, Clarke S, Bedford MT: **The novel human protein arginine N-methyltransferase PRMT6 is a nuclear enzyme displaying unique substrate specificity.** *J Biol Chem* 2002, **277**:3537–3543.
22. Kuppuswamy M, Subramanian T, Srinivasan A, Chinnadurai G: **Multiple functional domains of tat, the trans-activator of HIV-1, defined by mutational analysis.** *Nucleic Acids Res* 1989, **17**:3551–3561.
23. Garcia JA, Harrich D, Pearson L, Mitsuyasu R, Gaynor RB: **Functional domains required for tat-induced transcriptional activation of the HIV-1 long terminal repeat.** *EMBO J* 1988, **7**:3143–3147.
24. Reddy MV, Desai M, Jeyapaul J, Prasad DD, Seshamma T, Palmeri D, Khan SA: **Functional analysis of the N-terminal domain of tat protein of the human immunodeficiency virus type 1.** *Oncogene* 1992, **7**:1743–1748.
25. Ruben S, Perkins A, Purcell R, Joung K, Sia R, Burghoff R, Haseltine WA, Rosen CA: **Structural and functional characterization of human immunodeficiency virus tat protein.** *J Virol* 1989, **63**:1–8.
26. Pontius JU, Wagner L, Schuler GD: **UniGene: a unified view of the transcriptome.** In *The NCBI Handbook*. Edited by McEntyre J, Ostell J, Bethesda MD: National Center for Biotechnology Information; 2003.
27. Giard DJ, Aaronson SA, Todaro GJ, Arnstein P, Kersey JH, Dosik H, Parks WP: **In vitro cultivation of human tumors: establishment of cell lines derived from a series of solid tumors.** *J Natl Cancer Inst* 1973, **51**:1417–1423.
28. Menezes J, Leibold W, Klein G, Clements G: **Establishment and characterization of an Epstein-Barr virus (EBV)-negative lymphoblastoid B cell line (BJA-B) from an exceptional, EBV-genome-negative African Burkitt's lymphoma.** *Biomedicine* 1975, **22**:276–284.
29. Pfaffl MW: **A new mathematical model for relative quantification in real-time RT-PCR.** *Nucleic Acids Res* 2001, **29**:e45.
30. El-Andaloussi N, Valovka T, Touelle M, Steinacher R, Focke F, Gehrig P, Covic M, Hassa PO, Schar P, Hubscher U, Hottiger MO: **Arginine methylation regulates DNA polymerase beta.** *Mol Cell* 2006, **22**:51–62.
31. Michaud-Levesque J, Richard S: **Thrombospondin-1 is a transcriptional repression target of PRMT6.** *J Biol Chem* 2009, **284**:21338–21346.
32. Zhang X, Cheng X: **Structure of the predominant protein arginine methyltransferase PRMT1 and analysis of its binding to substrate peptides.** *Structure* 2003, **11**:509–520.
33. Zhang J, Tamilarasu N, Hwang S, Garber ME, Huq I, Jones KA, Rana TM: **HIV-1 TAR RNA enhances the interaction between tat and cyclin T1.** *J Biol Chem* 2000, **275**:34314–34319.
34. Sobhian B, Laguette N, Yatim A, Nakamura M, Levy Y, Kiernan R, Benkirane M: **HIV-1 tat assembles a multifunctional transcription elongation complex and stably associates with the 7SK snRNP.** *Mol Cell* 2010, **38**:439–451.
35. Dove BK, Surtees R, Bean TJ, Munday D, Wise HM, Digard P, Carroll MW, Ajuh P, Barr JN, Hiscox JA: **A quantitative proteomic analysis of lung epithelial (A549) cells infected with 2009 pandemic influenza A virus using stable isotope labelling with amino acids in cell culture.** *Proteomics* 2012, **12**:1431–1436.
36. Yoshimatsu M, Toyokawa G, Hayami S, Unoki M, Tsunoda T, Field HI, Kelly JD, Neal DE, Maehara Y, Ponder BA, *et al*: **Dysregulation of PRMT1 and PRMT6, type I arginine methyltransferases, is involved in various types of human cancers.** *Int J Cancer* 2011, **128**:562–573.
37. Ott M, Emiliani S, Van Lint C, Herbein G, Lovett J, Chirmule N, McCloskey T, Pahwa S, Verdin E: **Immune hyperactivation of HIV-1-infected T cells mediated by tat and the CD28 pathway.** *Science* 1997, **275**:1481–1485.
38. Ott M, Schnolzer M, Garnica J, Fischle W, Emiliani S, Rackwitz HR, Verdin E: **Acetylation of the HIV-1 tat protein by p300 is important for its transcriptional activity.** *Curr Biol* 1999, **9**:1489–1492.
39. Arya SK, Guo C, Josephs SF, Wong-Staal F: **Trans-activator gene of human T-lymphotropic virus type III (HTLV-III).** *Science* 1985, **229**:69–73.
40. Rayne F, Debaisieux S, Yezid H, Lin YL, Mettling C, Konate K, Chazal N, Arold ST, Pugniere M, Sanchez F, *et al*: **Phosphatidylinositol-(4,5)-bisphosphate enables efficient secretion of HIV-1 tat by infected T-cells.** *EMBO J* 2010, **29**:1348–1362.
41. Johri MK, Mishra R, Chhatbar C, Unni SK, Singh SK: **Tits and bits of HIV tat protein.** *Expert Opin Biol Ther* 2011, **11**:269–283.
42. Meredith LW, Sivakumaran H, Major L, Suhrbier A, Harrich D: **Potent inhibition of HIV-1 replication by a tat mutant.** *PLoS One* 2009, **4**:e7769.
43. Bradford MM: **A rapid and sensitive method for the quantitation of microgram quantities of protein utilizing the principle of protein-dye binding.** *Anal Biochem* 1976, **72**:248–254.
44. King J, Laemmli UK: **Polypeptides of the tail fibres of bacteriophage T4.** *J Mol Biol* 1971, **62**:465–477.

doi:10.1186/1743-422X-10-207

Cite this article as: Sivakumaran *et al*: Overexpression of PRMT6 does not suppress HIV-1 Tat transactivation in cells naturally lacking PRMT6. *Virology Journal* 2013 **10**:207.

Submit your next manuscript to BioMed Central and take full advantage of:

- Convenient online submission
- Thorough peer review
- No space constraints or color figure charges
- Immediate publication on acceptance
- Inclusion in PubMed, CAS, Scopus and Google Scholar
- Research which is freely available for redistribution

Submit your manuscript at
www.biomedcentral.com/submit

