


SHORT REPORT

Open Access

# A novel two-step, direct-to-PCR method for virus detection off swabs using human coronavirus 229E



Zachary P. Morehouse<sup>1,2\*</sup> , Caleb M. Proctor<sup>2,3</sup>, Gabriella L. Ryan<sup>2,3</sup> and Rodney J. Nash<sup>2,3,4\*</sup>

## Abstract

**Background:** Currently, one of the most reliable methods for viral infection detection are polymerase chain reaction (PCR) based assays. This process is time and resource heavy, requiring multiple steps of lysis, extraction, purification, and amplification procedures. Herein, we have developed a method to detect virus off swabs using solely shaker-mill based mechanical lysis and the transfer of the viral lysate directly to a PCR assay for virus detection, bypassing the substantial reagent and time investments required for extraction and purification steps.

**Methods:** Using Human Coronavirus 229E (HCoV-229E) as a model system, we spiked swabs in vitro for proof-of-concept testing. Swabs were spiked in serial dilutions from  $1.2 \times 10^6$  to  $1.2 \times 10^1$  copies/mL and then placed in 2 mL tubes with viral transport media (VTM) to mimic the specimen collection procedures in the clinic prior to processing via shaker-mill homogenization. After homogenization, 1  $\mu$ L of lysate was processed using RT-qPCR for amplification of the nucleocapsid (N) gene, qualifying viral detection.

**Results:** HCoV-229E in vitro spiked swabs were processed in a novel two-step, direct-to-PCR methodology for viral detection. After running 54 swabs, we confidently determined our limit of detection to be  $1.2 \times 10^3$  viral copies/mL with 96.30% sensitivity.

**Conclusion:** We have proven that the shaker-mill homogenization-based two-step, direct-to-PCR procedures provides sufficient viral lysis off swabs, where the resulting lysate can be used directly in PCR for the detection of HCoV-229E. This finding allows for reductions in the time and resources required for PCR based virus detection in comparison to the traditional extraction-to-PCR methodology.

**Keywords:** Virus detection, Viral diagnostics, PCR, Coronavirus

## Introduction

As the number of viral diseases are on the rise, it is critical to continue to innovate and advance diagnostic, treatment, and surveillance methods surrounding viral infections. Herein, we are proposing a novel method for viral pathogen detection off swabs as an improvement or alternative to the current PCR based assays commonly used

for viral detection [1, 2]. The traditional protocol for preparing a sample for PCR based detection often involves procedures of swabbing a patient, processing the sample to lyse the virus, extract, and purify its nucleotides, and then amplify the purified genetic material via PCR for detection of a gene product needed to confirm the patient's suspected diagnosis [3]. In the face of the COVID-19 pandemic, attempts have been made to perform PCR based diagnostics for SARS-CoV-2 with reduced time and cost, especially as the plastics and reagents needed for traditional viral nucleotide extractions have become scarce in

\* Correspondence: [moreho17@msu.edu](mailto:moreho17@msu.edu); [rnash2@gsu.edu](mailto:rnash2@gsu.edu)

<sup>1</sup>Michigan State University College of Osteopathic Medicine, East Lansing, MI, USA

<sup>2</sup>Omni International Inc, Kennesaw, GA, USA

Full list of author information is available at the end of the article



© The Author(s). 2020 **Open Access** This article is licensed under a Creative Commons Attribution 4.0 International License, which permits use, sharing, adaptation, distribution and reproduction in any medium or format, as long as you give appropriate credit to the original author(s) and the source, provide a link to the Creative Commons licence, and indicate if changes were made. The images or other third party material in this article are included in the article's Creative Commons licence, unless indicated otherwise in a credit line to the material. If material is not included in the article's Creative Commons licence and your intended use is not permitted by statutory regulation or exceeds the permitted use, you will need to obtain permission directly from the copyright holder. To view a copy of this licence, visit <http://creativecommons.org/licenses/by/4.0/>. The Creative Commons Public Domain Dedication waiver (<http://creativecommons.org/publicdomain/zero/1.0/>) applies to the data made available in this article, unless otherwise stated in a credit line to the data.

the face of an exponentially increased global demand [4–7]. Though some success has been seen with thermal and enzymatic digestion attempts on viral samples to expose the genetic material for extraction-less PCR detection, no method has shown high viral lysis in under 1 min when dealing with clinical concentrations of virus on swabs [5, 6, 8].

Shaker-mill homogenization as a form of mechanical lysis has been proven time and again as a successful method for disrupting tissues, microorganisms, and biologic samples for downstream molecular analysis; however, these downstream applications often require the use of additional purification, isolation, or extraction procedures before those analyses can be completed [9–12]. While, shaker-mill homogenization procedures have not yet been applied directly to diagnostic technologies, its ability to lyse organisms and tissues far tougher than a virus have been well categorized [9–12]. Building off the increased need for novel viral diagnostic methodologies, which reduce the resources and time required for accurate viral pathogen detection, we felt it was time to examine the capabilities of shaker-mill homogenization for viral lysis to be used for downstream detection.

Using human coronavirus 229E (HCoV-229E) as our model organism, we developed a novel two-step methodology of optimized shaker-mill homogenization parameters that allowed for direct-to-PCR viral detection. HCoV-229E is an enveloped, positive-sense, single-stranded RNA virus [13]. As a known human pathogen, it HCoV-229E is one of the four most common circulating coronaviruses associated with mild to moderate respiratory illness globally [13]. It is commonly included in commercial respiratory viral panel screening as a source of the common cold [13]. HCoV-229E was the chosen model for this project as a biosafety level 2 pathogen with similar genetic and protein composition to the current SARS-CoV-2 virus for developing novel diagnostic approaches, until the process is proven in vitro [13, 14]. The linear genome and enveloped structure of HCoV-229E allows for this virus to be a sufficient in vitro substitute for SARS-CoV-2 during the early stages of methodology development described within this manuscript [13].

## Materials and methods

### Cell culture and virus growth

Human coronavirus 229E (HCoV-229E) (ATCC, Cat. No. VR-740) was added at a multiplicity of infection (MOI) of 1.0 to an approximately 85% confluent T75 flask of MRC-5 cells (ATCC, Cat. No. CCL-171), 48 h after plating. The flask was maintained with DMEM (Fisher Scientific, Cat. No. 11–965-118) supplemented with 5% heat inactivated fetal bovine serum (Gemini Bioproducts, Cat. No. 100–500) and 1% L-Glutamine

(Gemini Bioproducts, Cat. No. 400–106), incubated at 37 °C with 5% CO<sub>2</sub> [15]. The cell culture supernatant was harvested at 72 h post infection when 80% cytopathic effect (CPE) was observed.

### Viral transport media formulation and production

Viral transport media (VTM) was produced following the US CDC (Atlanta, GA, USA) guidelines, found freely available on their website for formulation of VTM in a laboratory as an alternative to commercial VTM purchases. 500 mL of Hanks Balanced Salt Solution (HBSS) 1X with calcium and magnesium ions (no phenol red) (Fisher Science, Cat. No. SH3058801) was supplemented with 2% heat inactivated fetal bovine serum (Gemini Bioproducts, Cat. No. 100–500). 100 mg of Gentamicin (Gemini Bioproducts, Cat. No. 400-100P) and 500 µg of Amphotericin B (Gemini Bioproducts, Cat. No. 400-104P) was added to the mixture and mixed thoroughly to create a final product of VIRAL TRANSPOT MEDIA, 2% FBS, 100 µg/mL Gentamicin, 0.5 µg/mL Amphotericin B. This viral transport media was used for storage and processing of all swab samples in this manuscript.

### Swab viral spike

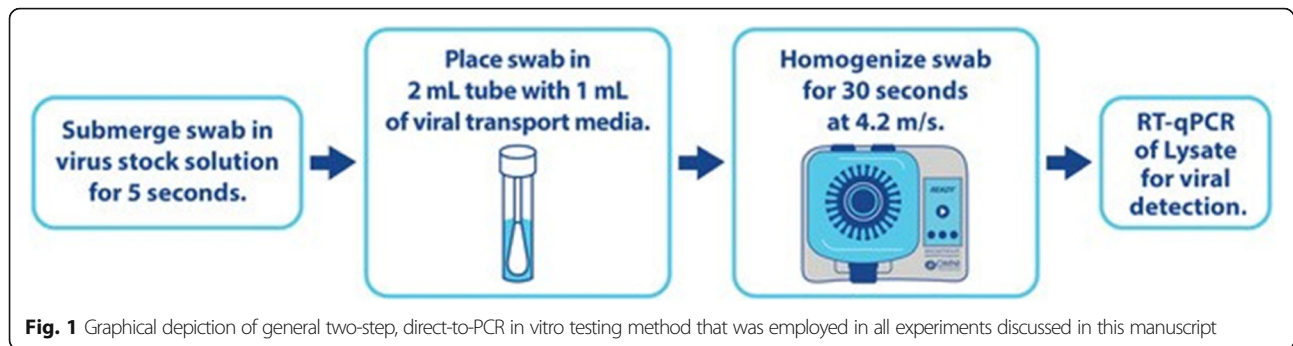
Sterile cotton swabs (Fisher Science, Cat. No. 22–029-488) were submerged for 5 s in viral solutions ranging from  $1.2 \times 10^7$  to  $1.2 \times 10^1$  viral copies/mL [16]. The swabs were exposed in a serial dilution pattern, with three swabs being exposed at each concentration log to evaluate the detection capabilities of this method. The saturated swabs were then placed in a 2 mL screw capped tube (Omni International, Cat. No. 19–648) pre-filled with 1 mL of viral transfer buffer [17]. The stem of the swab was then broken off at a level even with the top of the tube to allow for the cap to be screwed on for transporting and processing. The samples were prepared at 23 °C and then incubated for 1 h at 23 °C prior to processing.

### Shaker-mill swab processing for viral lysis

To maintain optimal levels of biosafety, the following shaker-mill processing was completed in a biosafety cabinet to protect the user from any potential aerosol production during processing. Twenty-four 2 mL screw cap tubes containing the virally spiked swabs were processed on the Omni Bead Ruptor Elite (Omni International, Cat. No. 19-040E) for 30 s at 4.2 m/s. This processing generated froth within the tube which was allowed to settle prior to removal of 1 µL of lysate for RT-qPCR (Fig. 1).

### HCoV-229E RT-qPCR

HCoV-229E nucleocapsid gene (N gene) was selected as a target for RT-PCR from Vabret et al. [1, 18]. The N



gene was targeted with forward primer 5'-AGGCGCAA GAATTCAGAACCAGAG-3' and reverse primer 5'-AGCAGGACTCTGATTACGAGAAAG-3' [1]. 1  $\mu$ L of sample lysate was added to create a final reaction volume of 20  $\mu$ L using the proportions of primers, sample, SYBR, RT, and DEPC-treated H<sub>2</sub>O as laid out in the New England Biolabs Luna RT-qPCR Kit (NEB, Cat. No. E3005S). Amplification of lysate was performed for 44 cycles and the resulting amplicons were loaded into a 2% agarose (Bio-Rad, Cat. No. 1613101) gel for product visualization. Out of abundance of caution, the loading of the PCR plate with viral lysate should be completed in a biosafety cabinet to protect the user from any potentially viable virus particles remaining following shaker-mill homogenization.

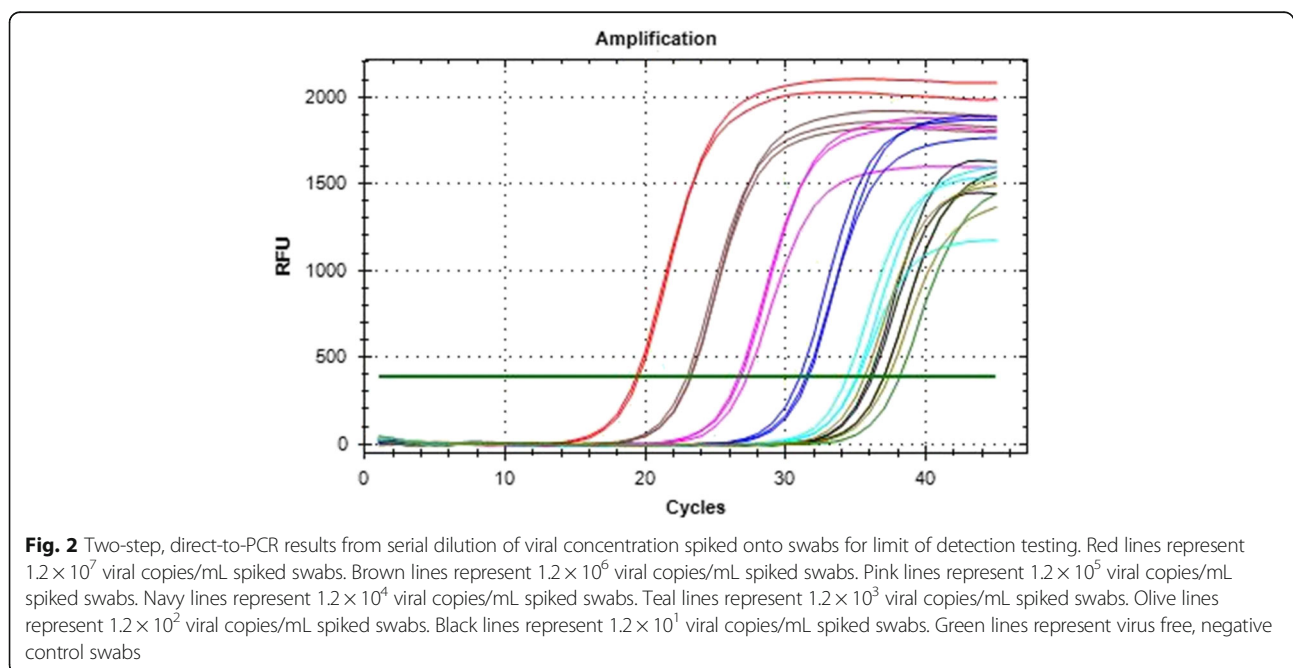
#### Plaque assay protocol for viral quantification

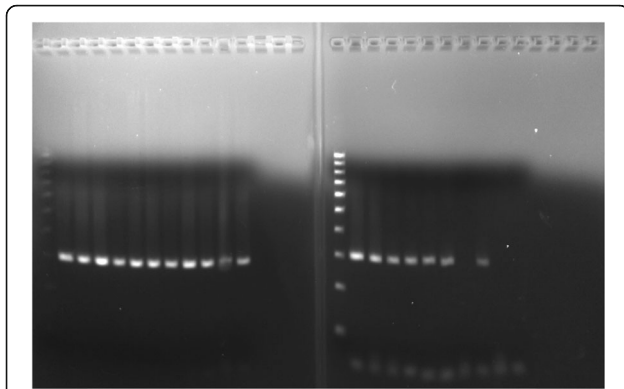
HcoV-229E was quantified with standard plaque assay protocols [19]. HEK-293 cells (ATCC, Cat. No. CRL-1573) were seeded at  $2.0 \times 10^5$  cells per well in 6 well

tissue culture treated plates (Fisher Science, Cat. No. 07-200-601) with 2 mL of DMEM (Fisher Scientific, Cat. No. 11-965-118) infused with 5% heat inactivated fetal bovine serum (Gemini Bioproducts, Cat. No. 100-500). Once the cells achieved 85% confluence, 200  $\mu$ L of HcoV-229E stock was added to the media of the first well. The media was gently mixed and 200  $\mu$ L of the infected media was transferred into the adjacent well. This was repeated to create serial dilutions throughout the plate. After 24 h of incubation, the virally infected media was removed from each well and replaced with 2 mL of DMEM infused with 5% heat inactivated FBS and 2% agarose (Bio-Rad, Cat. No. 1613101). The plate was incubated for an additional 5 days at 35 °C with 5% CO<sub>2</sub> and plaques were counted to determine viral concentration in plaque forming units/mL (PFU/mL).

#### Results

We have successfully demonstrated that shaker-mill homogenization using the Omni Bead Ruptor Elite





**Fig. 3** Gel visualization of amplicons from RT-qPCR shown in Fig. 2. Starting at the furthest left lane on the first gel, lane 1 is 100 bp DNA ladder, lanes 2 and 3 are amplicon visualization of  $1.2 \times 10^7$  viral copies/mL swab spike, lanes 4,5, and 6 are amplicon visualization of  $1.2 \times 10^6$  viral copies/mL swab spike, lanes 7,8, and 9 are amplicon visualization of  $1.2 \times 10^5$  viral copies/mL swab spike, lanes 10,11, and 12 are amplicon visualization of  $1.2 \times 10^4$  viral copies/mL swab spike, lanes 13,14,15 are empty. Starting with the furthest left lane on the second gel, lane 1 is 100 bp DNA ladder, lanes 2, 3, and 4 are amplicon visualization of  $1.2 \times 10^3$  viral copies/mL swab spike, lanes 5,6, and 7 are amplicon visualization of  $1.2 \times 10^2$  viral copies/mL swab spike, lanes 8, 9, and 10 are amplicon visualization of  $1.2 \times 10^1$  viral copies/mL swab spike, lanes 11,12, 13, 14, and 15 are empty. Visualization of a 308 bp amplicon is confirmatory of the HCoV-229E N gene

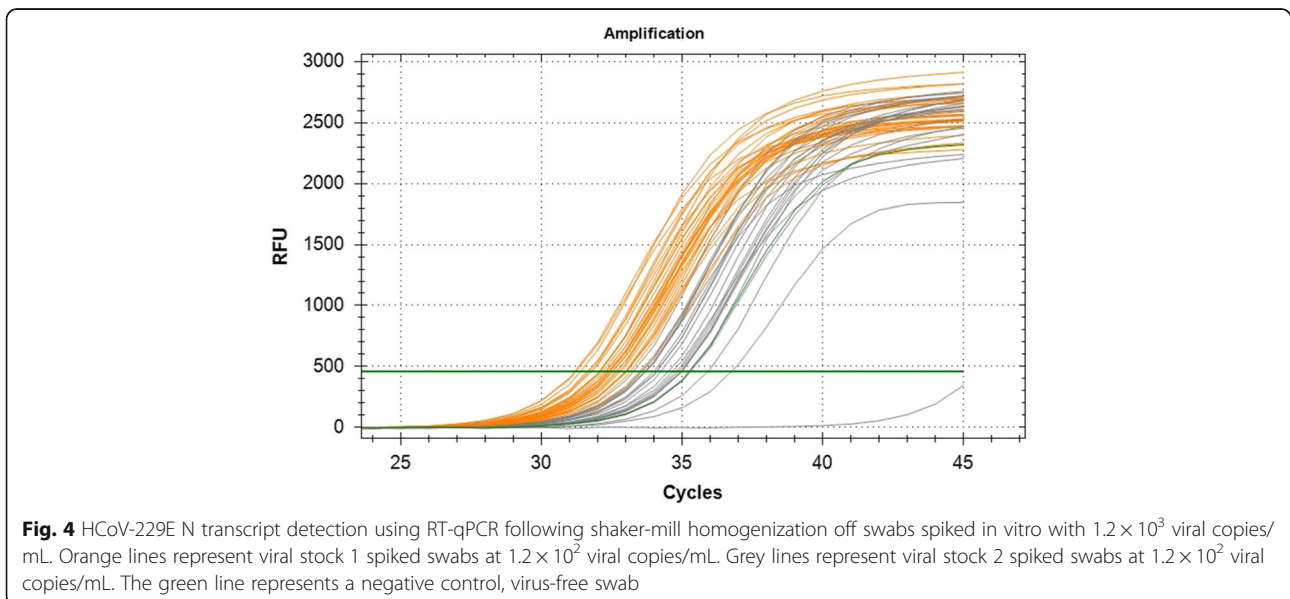
provides sufficient viral lysis from spiked swabs to allow for viral detection via direct RT-qPCR of the lysate. Using this novel method (Fig. 1) at our optimized run parameters of 4.2 m/s for 30s, we found the lower limit of reliable detection to be  $1.2 \times 10^3$  viral copies/mL (Figs. 2, 3). This limit of detection was evaluated for reproducibility by testing 56 in vitro spiked swabs from two different viral stock solutions, using RT-qPCR

(Fig. 4). The results were confirmed via amplicon visualization (Fig. 5) and demonstrated a sensitivity of 96.30% when processing with this two-step, direct-to-PCR method.

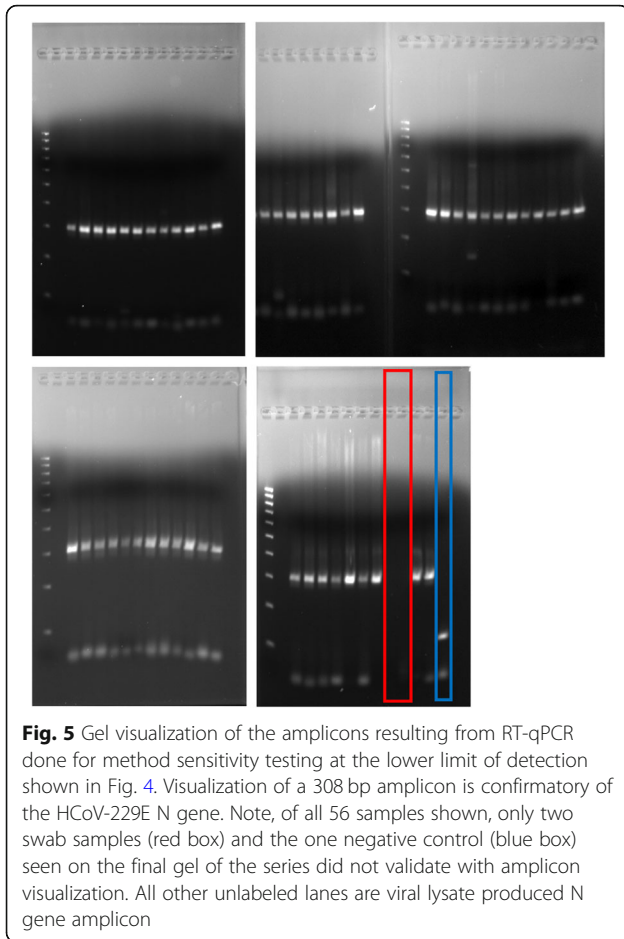
In addition to the strong method sensitivity shown with in vitro testing, we also consistently showed greater than 90% viral lysis after shaker-mill homogenization for 30s at 4.2 m/s. Plaque assays were used to determine percent lysis following homogenization as shown with decreased PFU counts between stock and lysate (Table 1).

## Discussion

The cost, time, and availability of current PCR assays have been considered prohibitive measures in the timely diagnosis and subsequent treatment of viral infections [20]. There is a critical need for the development of diagnostic technologies that help to improve access and reduce cost—this is especially important for increasing the treatment of infectious diseases in socioeconomically disenfranchised populations. While still in its infancy, it is our hope that this novel methodology can be applied as one potential solution for this need. The authors acknowledge that there are crucial next steps for clinical validation of this methodology but feel that the presented data is compelling and provides a strong starting point for this to occur. While these studies was completed using HCoV-229E as an in vitro model for methodology development geared towards SARS-CoV-2 applications, it is also our hope that this methodology can be further evaluated at both the benchtop and the bedside to be applied to other respiratory viruses also commonly tested for via nasopharyngeal or oropharyngeal swabs and PCR based detection.



**Fig. 4** HCoV-229E N transcript detection using RT-qPCR following shaker-mill homogenization off swabs spiked in vitro with  $1.2 \times 10^3$  viral copies/mL. Orange lines represent viral stock 1 spiked swabs at  $1.2 \times 10^2$  viral copies/mL. Grey lines represent viral stock 2 spiked swabs at  $1.2 \times 10^2$  viral copies/mL. The green line represents a negative control, virus-free swab



**Fig. 5** Gel visualization of the amplicons resulting from RT-qPCR done for method sensitivity testing at the lower limit of detection shown in Fig. 4. Visualization of a 308 bp amplicon is confirmatory of the HCoV-229E N gene. Note, of all 56 samples shown, only two swab samples (red box) and the one negative control (blue box) seen on the final gel of the series did not validate with amplicon visualization. All other unlabeled lanes are viral lysate produced N gene amplicon

In addition to the improvements to access of care, this two-step, direct-to-PCR methodology also has the potential to improve laboratory safety. As shown in Table 1, shaker-mill homogenization results in greater than 90% lysis of the virus in a sample. This high percentage of viral lysis demonstrates that there would be few, if any, viable viral particles left in the sample tube when the laboratory technician opens it for transfer to the RT-qPCR reaction. By using our two-step, direct-to-PCR methodology, the lab technician is also able to significantly reduce exposure to viral particles that would normally be increased when opening and closing sample tubes and adding buffers during traditional nucleic acid extraction processes. The low levels of viable and infectious viral particles

**Table 1** Viral lysis data at different run parameters of shaker-mill homogenization as determined by plaque assay

Run Parameter	Average Lysis
4.2 m/s for 15 s	62.5%
4.2 m/s for 30 s	97.0%
4.2 m/s for 60 s	87.5%

when the sample is opened result in decreased exposure potential through laboratory accidents or aerosolization during sample opening that could result in laboratory acquired infections.

In contrast to the many benefits provided by this novel methodology, the authors do acknowledge that introducing a new approach to existing methods is difficult. We expect to see resistance from laboratories with currently validated testing methods, researchers with years of experience using the traditional extraction-to-PCR process, and other commercial entities involved in the currently accepted processes for PCR based viral diagnostics. However, it is our opinion that when advancements in technology and methodology can be made that will improve access to care, reduce cost, and improve safety, it is our responsibility to the public to explore these options. In the face of increasing virally caused infections globally, it is our duty to do everything we can to shake every tree and turn over every stone to prepare society to combat these diseases.

## Conclusion

We have successfully proven that shaker-mill homogenization provides sufficient viral lysis off swabs, where the resulting lysate can be used directly in PCR based assays for the detection of virus. This novel two-step, direct-to-PCR method for viral detection off swabs has shown a lower limit of reliable detection at  $1.2 \times 10^3$  viral copies/mL with 96.30% sensitivity in vitro when screening for HCoV-229E. Herein, we have demonstrated the success of this methodology in vitro and propose it as a novel approach to viral detection that allows for decrease run time in comparison to traditional PCR based viral detection assay protocols, as well as a reduction in the materials needed for successful viral detection. Bypassing standard extraction methods, while maintaining a lower limit of detection one log below the reported viral load on clinically obtained swabs positive for coronavirus [16], we demonstrated that this novel method has warranted further clinical evaluation for its potential to reduce the cost and time needed for each test.

## Abbreviations

HCoV-229E: Human coronavirus 229E; PCR: Polymerase chain reaction; RT-qPCR: Quantitative reverse transcription polymerase chain reaction; RT: Reverse transcriptase; DMEM: Dibo Modified Eagles Media; VTM: Viral transport media; PFU: Plaque forming units

## Acknowledgments

We would like to acknowledge Pete Tortorelli, Karl Jahn, and Erik Masefield for their financial support and organizational support of the experiments needed for this publication. Additionally, we would like to acknowledge Rachel True, Rachel Nash, and Leah Proctor for their continued support of our work.

## Authors' contributions

**ZP Morehouse:** Conceptualization, methodology, validation, formal analysis, investigation, data curation, writing – original draft, review, and editing. **CM Proctor:** Methodology, validation, formal analysis, investigation, data curation,

writing – review and editing. **GL Ryan:** data curation, writing – review and editing. **RJ Nash:** Conceptualization, methodology, investigation, data curation, writing – review and editing, supervision, funding acquisition. The author(s) read and approved the final manuscript.

#### Funding

This work was supported solely through private funding by Omni International Inc.

#### Availability of data and materials

All data supporting this manuscript can be accessed by reaching out to the corresponding authors RJ Nash and ZP Morehouse directly at [rnash2@gsu.edu](mailto:rnash2@gsu.edu) and [moreho17@msu.edu](mailto:moreho17@msu.edu).

#### Ethics approval and consent to participate

Because no animals or patients were involved in this study, ethics approval is not applicable in this section.

#### Consent for publication

Not applicable.

#### Competing interests

ZP Morehouse, CM Proctor, GL Ryan, and RJ Nash all are currently employed by Omni International Inc. in some capacity but have no personal financial interests in the success of the company.

#### Author details

<sup>1</sup>Michigan State University College of Osteopathic Medicine, East Lansing, MI, USA. <sup>2</sup>Omni International Inc, Kennesaw, GA, USA. <sup>3</sup>Department of Biology, Georgia State University, 100 Piedmont Ave SE, 4th Floor, Atlanta, GA 30303, USA. <sup>4</sup>Jeevan Biosciences, Tucker, GA, USA.

Received: 3 July 2020 Accepted: 18 August 2020

Published online: 25 August 2020

#### References

- Vabret A, Mouthon F, Mourez T, Gouarin S, Petitjean J, Freymuth F. Direct diagnosis of human respiratory coronaviruses 229E and OC43 by the polymerase chain reaction. *J Virol Methods*. 2001;97(2001):59–66.
- Matoba Y, Abiko C, Ikeda T, Aoki Y, Suzuki Y, Yahagi K, Matsuzaki Y, Itagaki T, Katsushima F, Katsushima Y, Mizuta K. Detection of the human coronavirus 229E, HKU1, NL63, and OC43 between 2010 and 2013 in Yamagata, Japan. *Jpn J Infect Dis*. 2014;68:138–41. <https://doi.org/10.7883/yoken.JJID.2014.266>.
- Bustin SA, Nolan T. RT-qPCR testing of SARS-CoV-2: a primer. *Int J Mol Sci*. 2020;21(8):3004. <https://doi.org/10.3390/ijms21083004>.
- Basu A, Zinger T, Inglima K, Woo KM, Atie O, Yurasits L, See B, Agüero-Rosenfeld ME. Performance of Abbott ID NOW COVID-19 rapid nucleic acid amplification test in nasopharyngeal swabs transported in viral media and dry nasal swabs, in a New York City academic institution. *J Clin Microbiol*. 2020. <https://doi.org/10.1128/JCM.01136-20> Online ahead of print.
- Lu R, Wu X, Wan Z, Li Y, Jin X, Zhang C. A novel reverse transcription loop-mediated isothermal amplification method for rapid detection of SARS-CoV-2. 2020;21(8):2826. <https://doi.org/10.3390/ijms21082826>.
- Fomsgaard AS, Rosenstjerne MW. An alternative workflow for molecular detection of SARS-CoV-2 – Escape from the NA extraction kit-shortage, Copenhagen, Denmark, March 2020. *Euro Surveill*. 2020;25(14):200398. <https://doi.org/10.2807/1560-7917.ES.2020.25.14.2000398>.
- Bosworth A, Whalley C, Poxon C, Wanigasooriya K, Pickles O, Aldera EL, Popakonstantinou D, Morley GL, Walker EM, Zielinska AE, McLoughlin D, Webster C, Plant T, Ellis A, Richter A, Kidd IM, Beggs AD. Rapid implementation and validation of a cold-chain free SARS-CoV-2 diagnostic testing workflow to support surge capacity. *J Clin Virol*. 2020;128:104469. <https://doi.org/10.1016/j.jcv.2020.104469> Online ahead of print.
- Alcoba-Florez J, Gonzalez-Montelongo R, Inigo-Campos A, Gargia-Martinez de Artola D, Gil-Campesino H, The Microbiology Technical Support Team, Ciuffreda L, Valenzuela-Fernandez A, Flores C. Fast SARS-CoV-2 detection by RT-qPCR in preheated nasopharyngeal swab samples. *Int J Infect Dis*. 2020;S1201–9712(20):30406–9. <https://doi.org/10.1016/j.ijid.2020.05.099> Online ahead of print.
- Kleiner M, Thorson E, Sharp CE, et al. Assessing species biomass contributions in microbial communities via metaproteomics. *Nat Commun*. 2017;8(1):1558. Published 2017 Nov 16. <https://doi.org/10.1038/s41467-017-01544-x>.
- Peschek N, Hoyos M, Herzog R, Förstner KU, Papenfort K. A conserved RNA seed-pairing domain directs small RNA-mediated stress resistance in enterobacteria. *EMBO J*. 2019;38(16):e101650. <https://doi.org/10.15252/embj.2019101650>.
- Colosimo DA, Kohn JA, Luo PM, et al. Mapping interactions of microbial metabolites with human G-protein-coupled receptors. *Cell Host Microbe*. 2019;26(2):273–282.e7. <https://doi.org/10.1016/j.chom.2019.07.002>.
- Ramvalho J, Martins CSW, Galvão J, et al. Treatment of human immunodeficiency virus infection with tenofovir disoproxil fumarate-containing antiretrovirals maintains low bone formation rate, but increases osteoid volume on bone histomorphometry. *J Bone Miner Res*. 2019;34(9):1574–84. <https://doi.org/10.1002/jbmr.3751>.
- Corman VM, Muth D, Niemeyer D, Drosten C. Host and sources of endemic human coronaviruses. *Adv Virus Res*. 2018;100:163–79. <https://doi.org/10.1016/bs.aivir.2018.01.001>.
- Malik YA. Properties of coronavirus and SARS-CoV-2. *Malaysian J Pathol*. 2020;42(1):3–11 PMID: 32342926.
- Ziebuhr J, Herold J, Siddell SG. Characterization of a human coronavirus (strain 229E) 3C-like proteinase activity. *J Virol*. 1995;69(7):4331–8.
- Pan Y, Zhang D, Yang P, Poon LL, Wang Q. Viral load of SARS-CoV-2 in clinical samples. *Lancet Infect Dis*. 2020;20(4):411–2. [https://doi.org/10.1016/S1473-3099\(20\)30113-4](https://doi.org/10.1016/S1473-3099(20)30113-4).
- Piras A, Rizzo D, Longoni E, Turra N, Urru S, Saba PP, Musumano L, Bussu F. Nasopharyngeal swab collection in the suspicion of COVID-19. *Am J Otolaryngol*. 2020:102551. <https://doi.org/10.1016/j.amjoto.2020.102551> Online ahead of print.
- SoRelle JA, Frame I, Falcon A, et al. Clinical Validation of a SARS-CoV-2 Real-Time Reverse Transcription PCR Assay Targeting the Nucleocapsid Gene [published online ahead of print, 2020 Jun 1]. *J Appl Lab Med*. 2020;jfaa089. <https://doi.org/10.1093/jalm/jfaa089>.
- Mendoza EJ, Manguiat K, Wood H, Drobot M. Two detailed plaque assay protocols for the quantification of infectious SARS-CoV-2. *Curr Protoc Microbiol*. 2020;57(1):ecpmc105. <https://doi.org/10.1002/cmpc.105>.
- Vosters A, Arbyn M, Baay M, Bosch X, Sanjose SD, Hanley S, Karafillakis E, Lupalco PL, Yarwood J, Damme PV. Overcoming barriers in HPV vaccination and screening programs. *Papillomavirus Res*. 2017;4:45–53. <https://doi.org/10.1016/j.pvr.2017.07.001>.

#### Publisher's Note

Springer Nature remains neutral with regard to jurisdictional claims in published maps and institutional affiliations.

**Ready to submit your research? Choose BMC and benefit from:**

- fast, convenient online submission
- thorough peer review by experienced researchers in your field
- rapid publication on acceptance
- support for research data, including large and complex data types
- gold Open Access which fosters wider collaboration and increased citations
- maximum visibility for your research: over 100M website views per year

**At BMC, research is always in progress.**

Learn more [biomedcentral.com/submissions](https://biomedcentral.com/submissions)

